

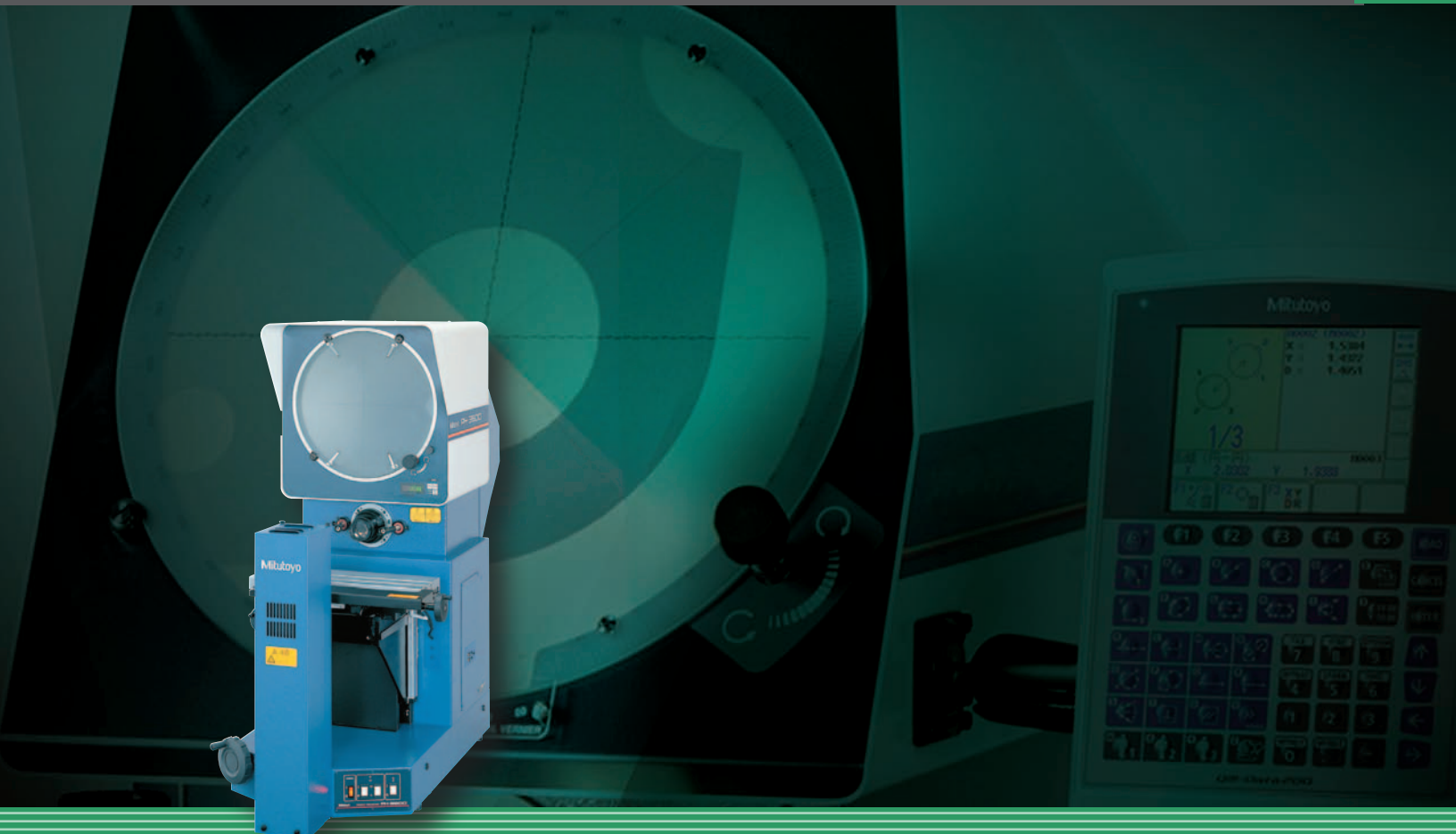
Mitutoyo

Mitutoyo Quality

PH-3515F PROFILE PROJECTOR

Heavy-Duty, Bench-Top Model with Horizontal Optical System

OPTICAL MEASURING



Find Quality Products Online at:

www.GlobalTestSupply.com

sales@GlobalTestSupply.com

Mitutoyo introduces the PH-3515F

Profile Projectors that will meet any optical measuring or inspection challenge your shop can offer!

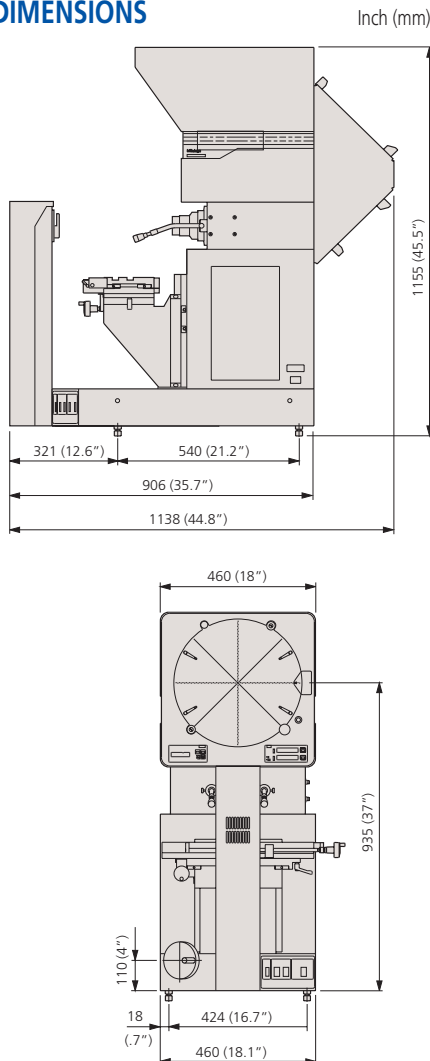
FEATURES

- Erect image on high brightness screen.
- 14" (353mm) dia. protractor screen with crosshairs and staggered lines for easy alignment.
- Digital angle measurement of 1' or 0.01° with built in angle counter.
- Floating-type workstage incorporates linear scales for fast, accurate measurement.
- Halogen contour illumination.
- Fiber-optic illumination cables and halogen included.
- Suitable for thread pitch measurements — free from blurred or distorted images when the workpiece is angled.
- Wide range of accessories for varied applications.



Also available:
Optional side mount surface illumination unit (172-423)

DIMENSIONS

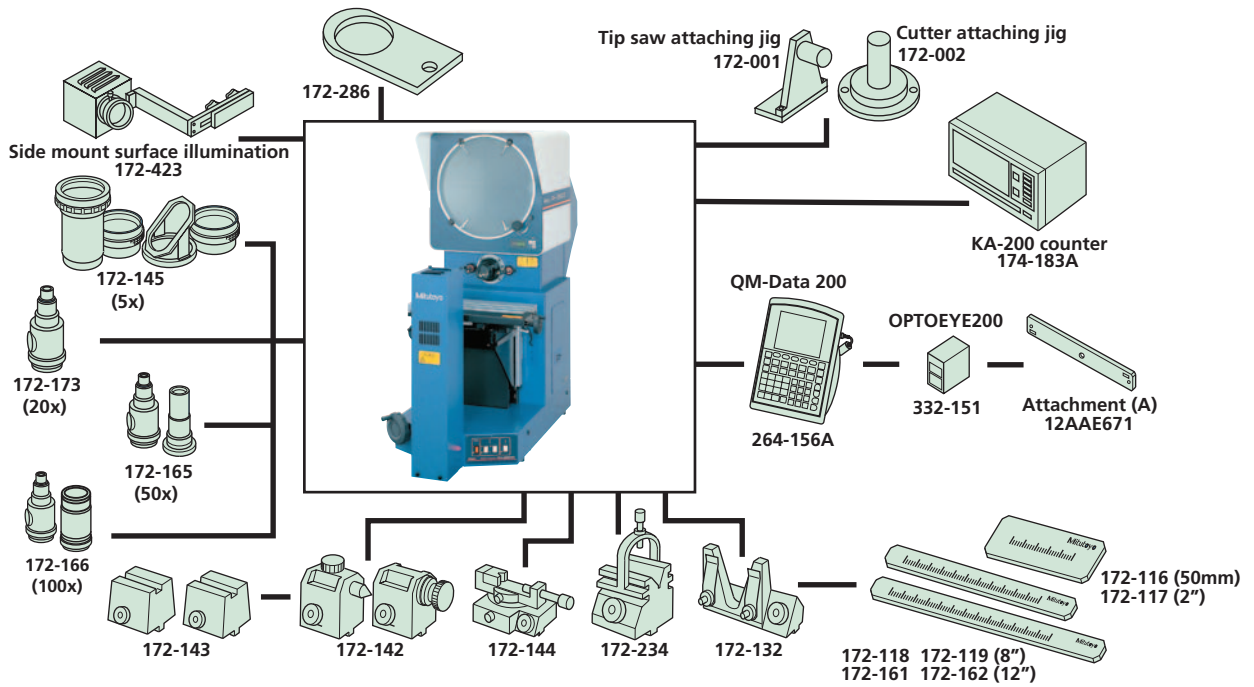


SPECIFICATIONS

Model No.	PH-3515F	
Order No.	172-868A	
Projected Image	Erect image	
Protractor screen	Effective diameter	14" / 353mm
	Screen material	Fine ground glass
	Reference line	Cross hair line
	Screen rotation	±360°, fine feed and clamp
	Angle display(LED)	Resolution: 1' or 0.01°(switchable), Range: ±370°, Functions: Absolute/incremental mode switching, Zero set
Projection lens	Standard accessory: 10x(172-184), Optional accessories: 5X, 20X, 50X, 100X	
Magnification accuracy	Contour illumination	±0.1% or less
	Surface illumination	±0.15% or less
Contour illumination	light source	Halogen bulb (24V 150W)
	Optical system	Telecentric system
	Functions	2-step brightness switch, Heat-absorbing filter, Cooling fan
Surface illumination (Optional accessories)	light source	Halogen bulb(24V 150W)
	Functions	Adjustable condenser lens. Heat-absorbing filter, Cooling fan
	Table travel (X-axis)	10" / 254mm
Table size (X, Z)	17.7"x5.7" / 450x146mm	
Vertical travel (Y-axis)	6" / 152mm	
Resolution	0.001mm/.00005"*	
Measuring Unit	Built in Linear scale	
XY Stage	Max. workpiece width	See (L) on page I-10
	Max. workpiece load	100lbs / 45kg
Power supply	120V AC, 50/60Hz	
Mass	333lbs / 150kg	
Standard accessories	10x projection lens set, work stage, power cord, halogen bulb, tube fuse, grounding wire, allen wrench, Vinyl cover	

* Counter not included

SYSTEM DIAGRAM

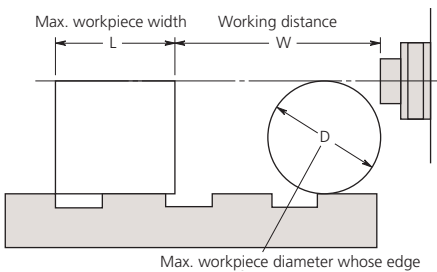


ACCESSORIES

Projection Lenses



Projection Capacity



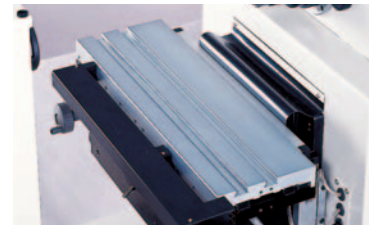
PH-3515F

Unit: mm

	Magnification				
	5X	10X	20X	50X	100X
View field	70.6	35.3	17.65	7.06	3.5
L	175	235	235	80	109
W	160 (64)	93 (35)	40	14.6	9.5
D	152.4	152.4	116	30.4	19

(): When using surface illumination

Workstage



XY range	X-axis (horizontal travel): 10" (254mm)
Y-axis (vertical travel): 6" (152mm)	
Measuring unit	Linear Scale for each axis (AT100 Series)
Display unit	(Optional)
Stage size (WxD)	17.72"x5.75" (450x146mm)
Swivel range	±10° (30' readout)
Max. workpiece load	99 lbs. (45kg)
Dovetail groove	Two (Pitch= 1.69" (43mm))
Focusing travel	2" (50mm)

KA-200 Counter: 174-183A
64AAB149: Counter stand



QM-Data200
2-D data processing unit.
264-155A: Stand mount type
264-156A: Arm mount type



332-151: Optoeye
Edge detection system for QM-Data 200
12AAE671: Detector attachment (A)



See page 4 for additional optional accessories

Optional Accessories

- 172-184:** 10X projection lens (standard accessory)
- 172-173:** 20X projection lens
- 172-165:** 50X projection lens set
- 172-166:** 100X projection lens set
- 172-116:** Standard scale (50mm)
- 172-117:** Standard scale (2")
- 172-118:** Reading scale (200mm)
- 172-161:** Reading scale (300mm)
- 172-119:** Reading scale (8")
- 172-162:** Reading scale (12")
- 172-286:** Green filter
- 512305:** Halogen bulb (24V, 150W) (standard accessory)

Fixture and Stage accessories

- 172-142:** Center support
- 172-143:** Center support riser
- 172-144:** Rotary vise
(Max. workpiece dia.: 2.4" / 60mm)
- 172-234:** V-block with clamp
(Max. workpiece dia.: 2" / 50mm)
- 172-132:** Vertical holder
- 64AAB176:** Machine stand 22"W x 25" D x 26"H

Stand

- 64AAB176**
Locking door
22"W x 25"H x 29"D



Center Support

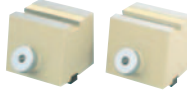
172-142



Clamps a cylindrical workpiece such as a screw
Workpiece dia.: 120mm max

Center Support Riser

172-143



Widens the damping capacity of the center support to a maximum diameter of 240mm.

Reading Scales

- 172-118** (200mm)
 - 172-161** (300mm)
 - 172-119** (8")
 - 172-162** (12")
- Designed for checking the magnified image of a standard scale.



Rotary Vise

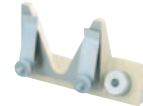
172-144



Workpiece dia.: 60mm max

Vertical Holder

172-132



Set up a thin workpiece easily

Standard Scales

- 172-116** (50mm)
- 172-117** (2")



Used for checking magnifying accuracy.

V-Block w/ Clamp

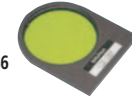
172-234



Workpiece dia.: 50mm max

Green Filter

172-286



Increases the screen sharpness of the contour image.

Coordinate Measuring Machines

Vision Measuring Systems

Form Measurement

Optical Measuring



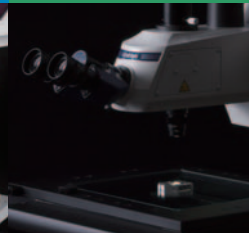
Sensor Systems



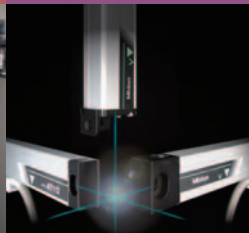
Test Equipment
and Seismometers



Digital Scale and DRO Systems



Small Tool Instruments
and Data Management



**Whatever your challenges are,
Mitutoyo supports you from start to finish.**

Mitutoyo is not only a manufacturer of top-quality measuring products but one that also offers qualified support for the lifetime of the equipment, backed by comprehensive services that ensure your staff can make the very best use of the investment.

Apart from the basics of calibration and repair, Mitutoyo offers product and metrology training, as well as IT support for the sophisticated software used in modern measuring technology. We can also design, build, test and deliver measuring solutions and even, if deemed cost-effective, take your critical measurement challenges in-house on a sub-contract basis.