

# DP-CALC™ MICROMANOMETERS MODELS 5815 AND 5825



The DP-Calc 5815 and 5825 micromanometers allow you to easily make HVAC pressure measurements. These robust instruments can be used with Pitot probes to measure duct velocity. The DP-Calc 5815 is a simple to operate, hand held digital micromanometer for fast, accurate differential and static pressure measurements. The high performance DP-Calc 5825 can calculate flow and has data logging capabilities.

## Applications

- + HVAC commissioning and troubleshooting
- + Testing and balancing
- + Pitot tube duct traverses
- + Static pressure measurements
- + Pressure drop across filters, coils, fans, and diffusers
- + Environmental air flow testing

## Features and Benefits

- + Measure differential and static pressure from -15 to +15 in. H<sub>2</sub>O (-3735 to +3735 Pa)
- + Calculate and display velocity when using a Pitot tube

## Added Features Model 5825

- + Calculates flow
- + Variable time constant
- + Statistics
- + Data logging with time and date stamp
- + Stores 12,700+ samples and 100 test IDs
- + Includes LogDat2™ downloading software
- + Programmable K factors

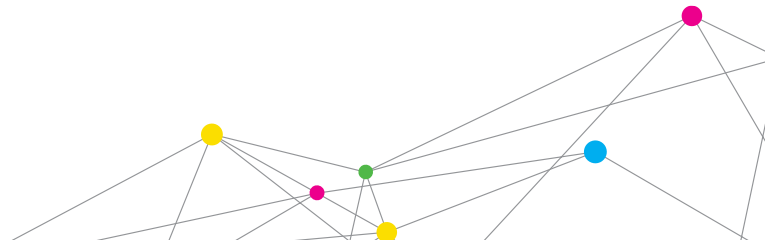


UNDERSTANDING, ACCELERATED

Find Quality Products Online at:

[www.GlobalTestSupply.com](http://www.GlobalTestSupply.com)

[sales@GlobalTestSupply.com](mailto:sales@GlobalTestSupply.com)



# SPECIFICATIONS

## DP-CALC™ MICROMANOMETERS MODELS 5815 AND 5825

### Static/Differential Pressure

Range <sup>1</sup>	-15 to +15 in. H <sub>2</sub> O (-28.0 to +28.0 mm Hg, -3735 to +3735 Pa)
Accuracy	±1% of reading ±0.005 in. H <sub>2</sub> O (±0.01 mm Hg, ±1 Pa)
Resolution	0.001 in. H <sub>2</sub> O (0.1 Pa, 0.01 mm Hg)

### Velocity (Pitot Tube)

Range <sup>2</sup>	250 to 15,500 ft/min (1.27 to 78.7 m/s)
Accuracy <sup>3</sup>	±1.5% at 2,000 ft/min (10.16 m/s)
Resolution	1 ft/min (0.1 m/s)

### Duct Size (5825)

1 to 500 inches in increments of 0.1 in.  
(2.5 to 1270 cm in increments of 0.1 cm)

### Volumetric Flow Rate (5825)

Range	Actual range is a function of velocity, pressure, duct size, and K factor
-------	--

### Instrument Temperature Range

Operating	40 to 113°F (5 to 45°C)
Storage	-4 to 140°F (-20 to 60°C)

### Data Storage Capabilities (5825)

Range	12,700+ samples and 100 test IDs
-------	----------------------------------

### Logging Interval (5825)

1 second to 1 hour

### Time Constant (5825)

User selectable

### External Meter Dimensions

3.3 in. x 7.0 in. x 1.8 in. (8.4 cm x 17.8 cm x 4.4 cm)

### Meter Weight with Batteries

0.6 lbs. (0.27 kg)

### Power Requirements

Four AA-size batteries (5815)  
Four AA-size batteries or optional AC adapter (5825)

<sup>1</sup>Overpressure range = 190 in. H<sub>2</sub>O (7 psi, 360 mmHg, 48 kPa).

<sup>2</sup>Pressure velocity measurements are not recommended below 1,000 ft/min (5 m/s).

<sup>3</sup>Accuracy is a function of converting pressure to velocity. Conversion accuracy improves when actual pressure values increase.

Specifications are subject to change without notice.

DP-Calc is a trademark, and TSI and the TSI logo are registered trademarks of TSI Incorporated.

	5815	5825
Differential and static pressure	+	+
Velocity with pitot tube	+	+
Sample statistics		+
Volumetric flow rate		+
Actual and standard velocity		+
Variable time constant		+
LogDat2 downloading software		+
K factor		+
Certificate of Calibration	+	+



UNDERSTANDING, ACCELERATED