

## IPAQ R202

# PC-Programmable 2-wire Transmitter for Pt100 Input



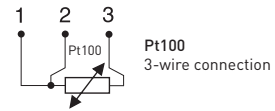
IPAQ R202 is a digital, easy-to-use temperature transmitter developed for measurements with Pt100 sensors. Its robust design and high quality gives excellent performance and accuracy also under harsh conditions. With the new runtime counter function you can easily supervise the elapsed operational time between calibrations.

- Input: Pt100 in 3-wire connection
- PC configurable measuring ranges without need for calibration
- Freely adjustment of zero point and input range
- Temperature linear output
- Runtime counter
- Excellent EMC immunity
- Configuration without external power
- Easy-to-use Windows configuration software
- USB communication
- Withstands vibrations up to 5 g

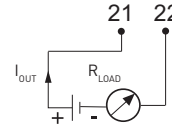
### Specifications:

<b>Input Pt100</b>	3-wire connection
Pt100 ( $\alpha=0.00385$ )	-200 to +850 °C / -328 to +1562 °F
<b>Sensor failure</b>	Upscale ( $\geq 21.0$ mA) or downscale ( $\leq 3.6$ mA) action
<b>Adjustments</b>	
Zero adjustment	Any value within range limits
Minimum span	20 °C / 36 °F
Sensor error compensation	$\pm 10\%$ of span for span $< 100^\circ\text{C}/180^\circ\text{F}$ otherwise $\pm 10^\circ\text{C}/\pm 18^\circ\text{F}$
<b>Output</b>	4...20 mA, temperature linear
Adjustable filtering level	0.13 to 54 s, (default 0.9 s)
Permissible load	818 $\Omega$ @ 24 VDC
Response time	< 50 ms
<b>Environment conditions</b>	
Ambient temperature	-40 to + 85 °C / -40 to +185 °F
Humidity	0...98% RH (non-condensing)
Vibrations	Acc. to IEC 60068-2-6, test Fc, 10...2000 Hz, 5 g
EMC	Directive: 2014/30/EU Harmonized standards: EN 61326-1, EN 61326-2-3
<b>Galvanic isolation</b>	No
<b>Power supply</b>	6.0...32.0 VDC
<b>Accuracy <sup>1)</sup></b>	Max of $\pm 0,1\text{K}$ or $\pm 0,1\%$ of span
Long-term stability	$\pm 0.1$ % of span per year
<b>Mounting</b>	Rail acc. to DIN EN 50022, 35 mm
Weight	50 g / 0.11 lb
Protection, housing / terminals	IP 20 / IP 00

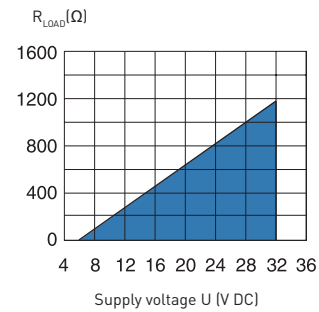
### Input connections



### Output connections

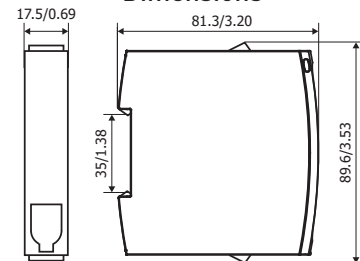


### Output load diagram



$$R_{LOAD} = (U - 6) / 0.022$$

### Dimensions



mm/inches

### Ordering information

IPAQ R202	70R2020010
PC configuration kit (USB-conn.)	70CFGUSX01