

Leica DISTO™ D810 touch

The original laser distance meter



- when it has to be **right**

Leica
Geosystems

Instrument Set-up -----	2
Introduction -----	2
Overview -----	2
Basic measuring screen -----	3
Selection screen -----	3
Pointfinder (Viewscreen) -----	4
Charging the Li-Ion battery via USB -----	5
Operations -----	6
Using the Touch Screen -----	6
Switching ON/OFF -----	7
Clear -----	7
Message Codes -----	7
Multifunctional endpiece -----	7
Permanent / Minimum-Maximum measuring -----	7
Add / Subtract -----	8
Pointfinder (Viewscreen) -----	8
Screenshot -----	9
Settings -----	10
Overview -----	10
Tilt units -----	10
Distance units -----	11
Beep ON/OFF -----	12
Digital level ON/OFF -----	12
De-/Activate keylock -----	12
Switch on with keylock -----	12
Bluetooth® Settings -----	13
Calibration of tilt sensor (Tilt Calibration) -----	14
Personalized favorites -----	15
Illumination -----	15
Touch Screen ON/OFF -----	15
Date and Time -----	16
Compass Adjustment -----	16
Offset -----	17
Reset -----	17
Functions -----	18
Overview -----	18
Timer -----	18
Calculator -----	19
Adjusting measuring reference/tripod -----	19
Memory -----	20
Measuring single distance -----	20
Smart Horizontal Mode -----	20

Level -----	21
Area -----	21
Volume -----	22
Photo -----	23
Compass -----	24
Gallery -----	25
Triangular area -----	26
Long range mode -----	26
Height-profile measurement -----	27
Sloped objects -----	28
Height tracking -----	29
Trapezium -----	30
Stake out -----	31
Pythagoras (2-point) -----	32
Pythagoras (3-point) -----	33
Width -----	34
Diameter -----	35
Area from Photo -----	36

Technical Data ----- **37**

Message Codes ----- **38**


Care ----- **38**


Warranty ----- **38**

Safety Instructions ----- **39**

Areas of responsibility -----	39
Prohibited use -----	39
Limits of use -----	39
Disposal -----	40
Electromagnetic Compatibility (EMC) -----	40
FCC statement (applicable in U.S.) -----	40
Déclaration FCC, applicable aux Etats-Unis -----	41
Normativa FCC (aplicable en EE UU) -----	41
Use of the product with Bluetooth® -----	42
Laser classification -----	42
Labelling -----	42

Introduction

 The safety instructions and the user manual should be read through carefully before the product is used for the first time.

 The person responsible for the product must ensure that all users understand these directions and adhere to them.


The symbols used have the following meanings:

 **WARNING**

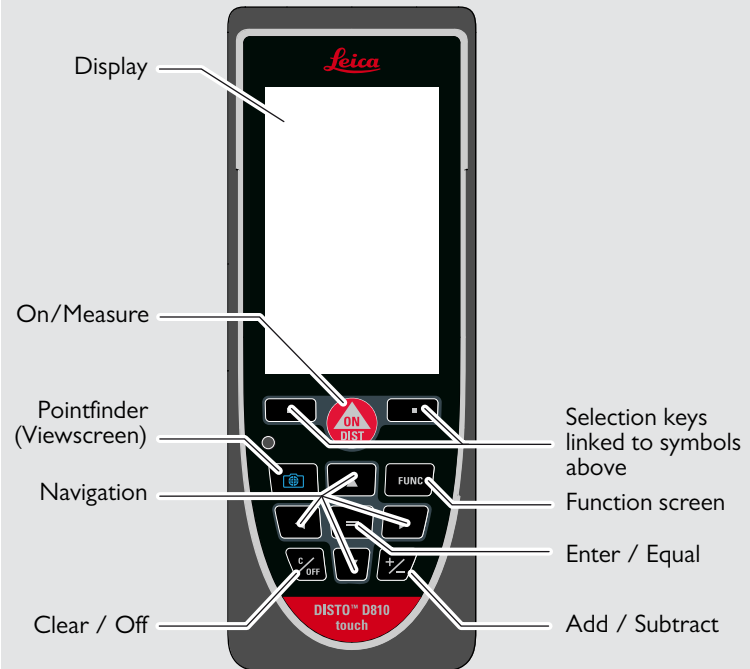
Indicates a potentially hazardous situation or an unintended use which, if not avoided, will result in death or serious injury.

 **CAUTION**

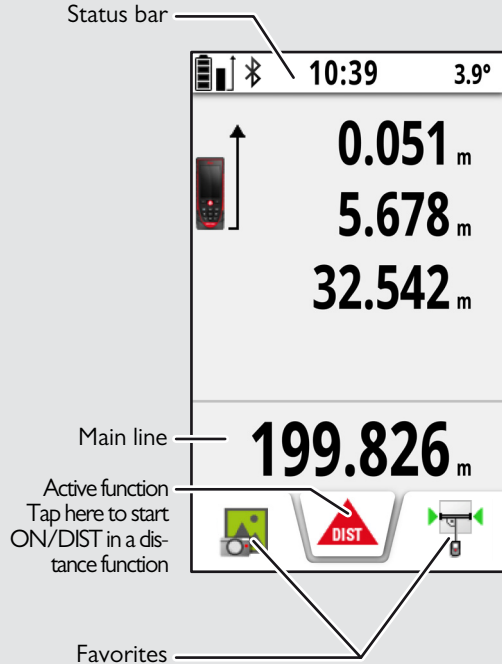
Indicates a potentially hazardous situation or an unintended use which, if not avoided, may result in minor injury and/or appreciable material, financial and environmental damage.

 Important paragraphs which must be adhered to in practice as they enable the product to be used in a technically correct and efficient manner.

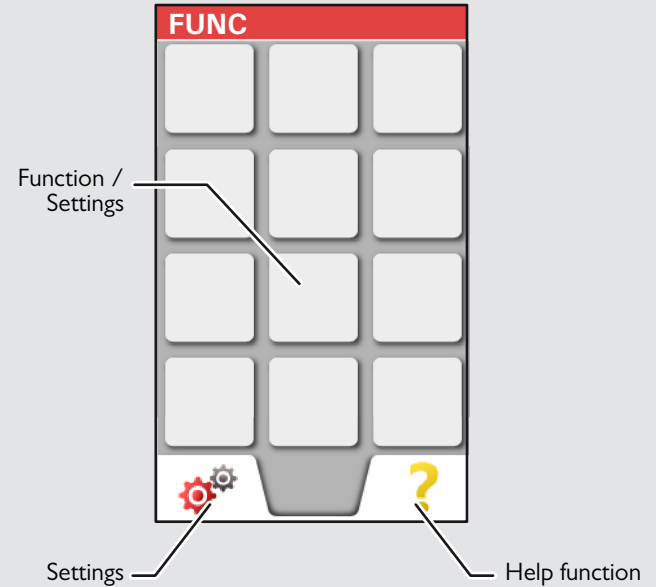
Overview



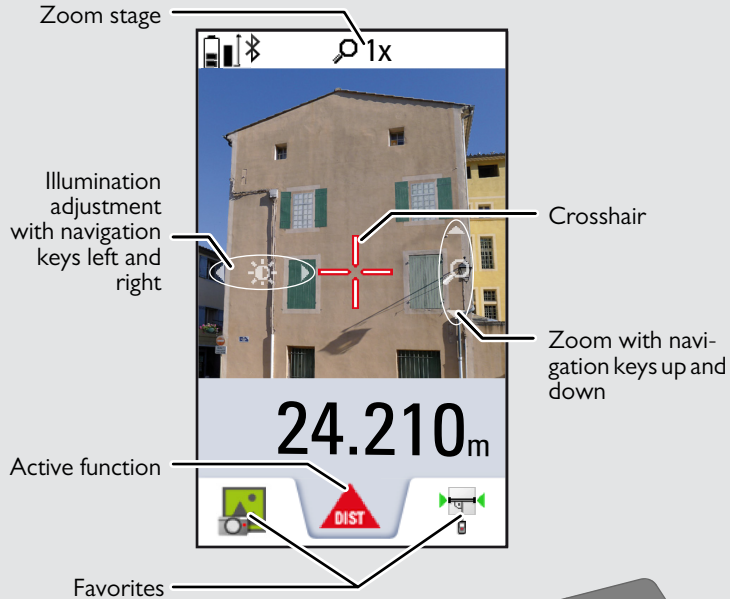
Basic measuring screen



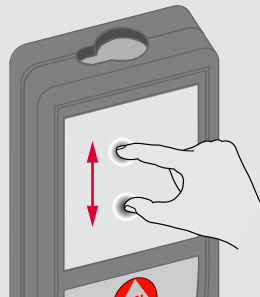
Selection screen



Pointfinder (Viewscreen)



Spread 2 fingers apart to zoom on the touch screen

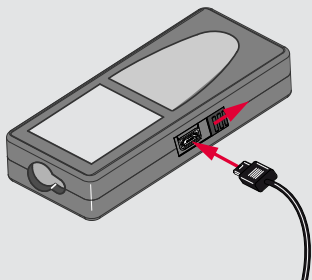


Charging the Li-Ion battery via USB

Charge the battery before using it for the first time. Use the provided cable to charge the battery.

Plug the small end of the cable into the port of the device, and plug the end of the charger into an electrical socket. Select the appropriate connector for your country. The device cannot be used while it is charging.

The computer can also be used to charge the device, but this takes more time. If the device is connected to the computer via USB cable, you can download or delete the gallery. **It is not possible to upload any data.**



When you charge the battery, the following icons show the status:

Charging



Fully charged



4 h

i

Charge batteries when battery symbol is flashing. While charging, the device may heat up. This is normal and should not affect the device's lifespan or performance. If the battery gets hotter than 40°C / 104°F, the charger stops.

At a recommended storage temperature of -20°C to +30°C (-4°F to +86°F), batteries containing a 50% to 100% charge can be stored up to 1 year. After this storage period the batteries must be recharged.

To save energy, unplug the charger when not in use.

CAUTION

Connecting the charger improperly may cause serious damage to the device. Any damage caused by misuse is not covered by the warranty. Use only Leica-approved chargers, batteries, and cables. Unapproved chargers or cables can cause the battery to explode or damage the device.

If the device is connected to the computer via USB cable, you can download or delete the gallery. It is not possible to upload any data.

Using the Touch Screen

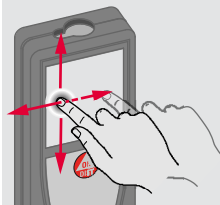
- i** Use only fingers to use the touch screen.
Do not allow the touch screen to come into contact with other electrical devices.
Electrostatic discharges can cause the touch screen to malfunction.
Do not allow the touch screen to contact water. The touch screen may malfunction in humid conditions or when exposed to water.
To avoid damaging the touch screen, do not tap it with anything sharp or do not apply excessive pressure to it with your fingertips.

Tapping



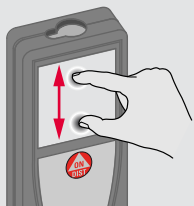
Tap on the display to open an on-screen button or to make a selection. Tapping on the icon in the middle of the bottom line activates the distance measurement or triggers the camera.

Dragging



Drag on the display to move to prior or to next screen in the galerie function.

Pinching

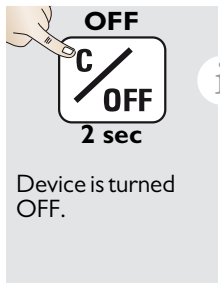


Spread 2 fingers apart to zoom if pointfinder is activated.

i

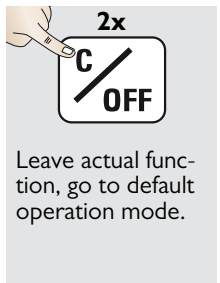
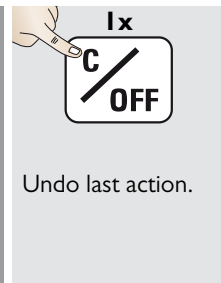
Instead of using the touch screen, the normal keypad buttons can be used also.

Switching ON/OFF



i If no key is pressed for 180 sec, the device switches off automatically.

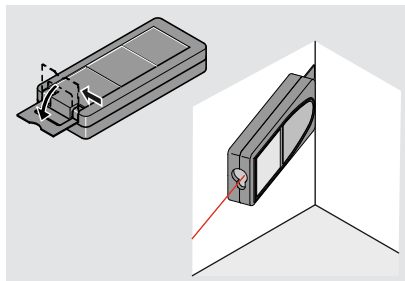
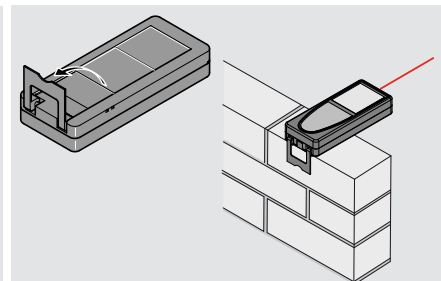
Clear



Message Codes

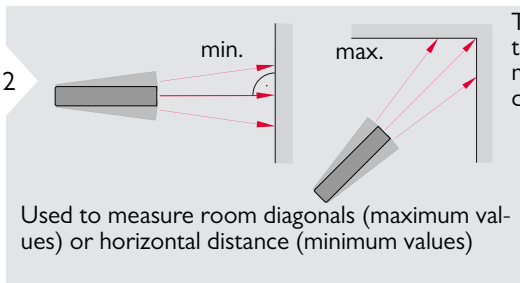
If the info icon appears with a number, observe the instructions in section "Message Codes". Example:

Multifunctional endpiece



i The orientation of the endpiece is automatically detected and the zero point is accordingly adjusted.

Permanent / Minimum-Maximum measuring



The minimum and maximum distance measured is displayed (min, max.). The last value measured is displayed in the main line.



Add / Subtract

1 **ON DIST**
7.332 m

2 **+**
The next measurement is **added** to the previous one.

3 **ON DIST**
7.332 m
12.847 m

4 **=**
20.179 m

i This process can be repeated as required. The same process can be used for adding or subtracting areas or volumes.

Pointfinder (Viewscreen)

1 **Pointfinder icon**
0.00m

2 **+**
4x
2x
1x
OV*

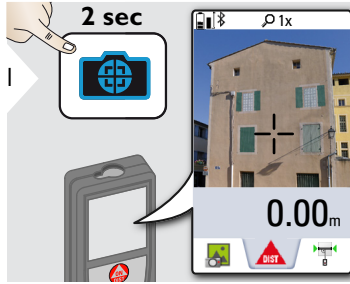
3 **←**

4 **Pointfinder icon**
Exit pointfinder (viewscreen).

i This is a great help for outdoor measuring. The integrated pointfinder (viewscreen) shows the target on the display. The device measures in the middle of the cross hair, even if the laser dot is not visible. Parallax errors occur when the pointfinder camera is used on close targets, with the effect that the laser appears displaced in the crosshair. In this case rely on the real laser dot.

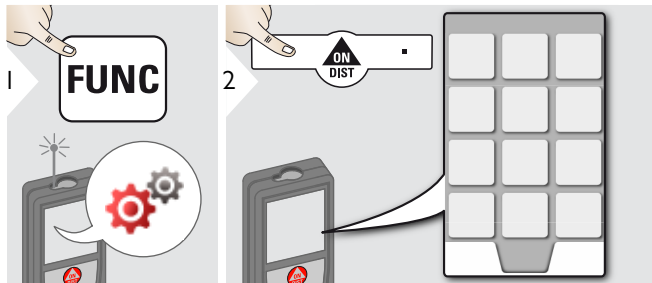
* OV = Overview

Screenshot



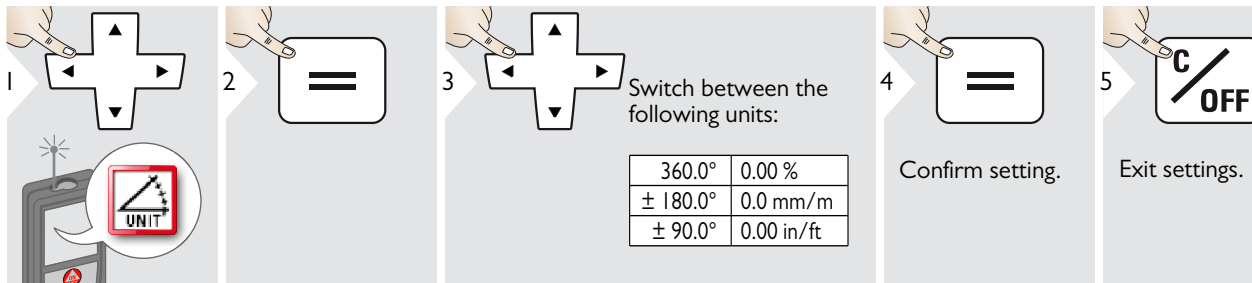
Screenshot photo is saved in gallery.

Overview

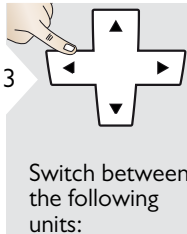
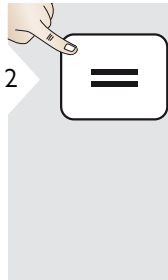
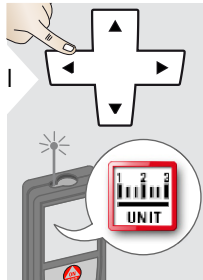


	Tilt units
	Distance units
	Beep
	Digital level
	Keypad lock
	Bluetooth® Smart
	Tilt calibration
	Favorites
	Illumination
	Touch screen
	Date and Time
	Compass adjustment
	Offset
	Reset
	Information
	Country Information

Tilt units



 Distance units

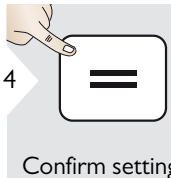


Art. No. 792297:

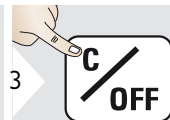
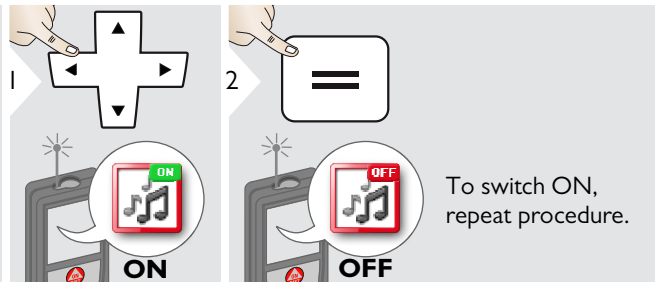
0.00 m	0.00 ft
0.000 m	0.00 in
0.0000 m	0 in 1/32
0.0 mm	0'00" 1/32

US-Model Art. No. 799097:

0.00 m	0 in 1/16
0.000 m	0'00" 1/16
0.0000 m	0 in 1/8
0.0 mm	0'00" 1/8
0.00 ft	0 in 1/4
0.00 in	0'00" 1/4
0 in 1/32	0.000 yd
0'00" 1/32	

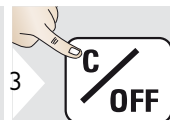
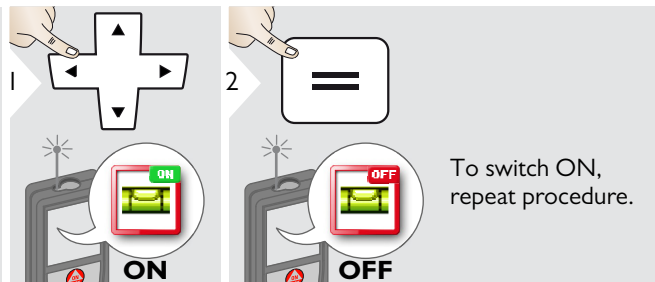


Beep ON/OFF



Exit settings.

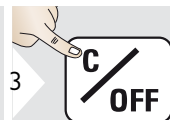
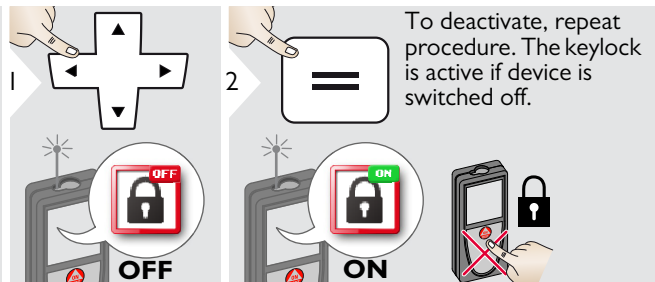
Digital level ON/OFF



Exit settings.

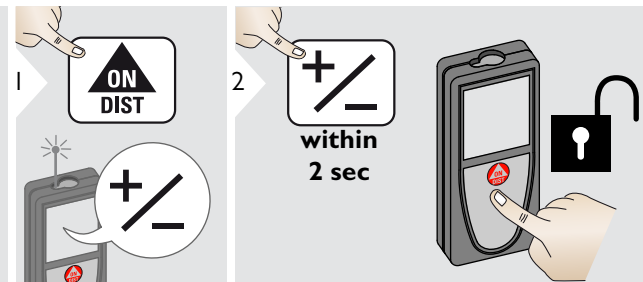
i The digital level is displayed in the status bar.

De-/Activate keylock

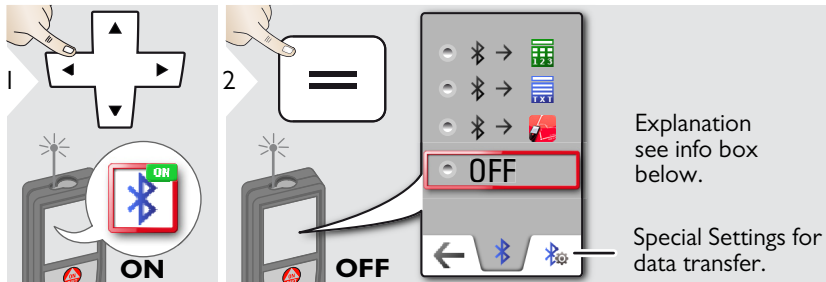


Exit settings.

Switch on with keylock



Bluetooth® Settings



i Default mode: Bluetooth® is switched on and black Bluetooth® icon is displayed in status bar. Blue Bluetooth® icon in status line is displayed if device is connected with Bluetooth®.

OFF Switches Bluetooth® off.

i

Figure Mode: Use this mode if the data needs to be transferred in figures, e.g. working with spread sheets. Ft/in fractional is converted into ft/in decimal.

Device is connected. Favorites disappear and two softkeys appear:

 Allows the arrow keys to move the cursor on your computer.

 sends the value of the main line to the computer.



Text Mode: Use this mode if the data needs to be transferred as text, e.g. working with word processing programs.

Device is connected. Favorites disappear and two softkeys appear:

 Allows the arrow keys to move the cursor on your computer.

 sends the value of the main line to the computer.



App Mode: Use this mode to transfer the data using an App. Special properties: ENCRYPTED is the default setting. In case of trouble with data transfer, select mode UNENCRYPTED.

i

Switch on Bluetooth® Smart in Settings. Connect the device with your smart phone, tablet, laptop,...

The actual measurement is transferred automatically if Bluetooth® connection is established. To transfer a result from the main line, press =. Bluetooth® switches off as soon as the laser distance meter is switched off.

The efficient and innovative Bluetooth® Smart module (with the new Bluetooth® standard V4.0) works together with all Bluetooth® Smart Ready devices. All other Bluetooth® devices do not support the energy saving Bluetooth® Smart Module, which is integrated in the device.

We provide no warranty for free DISTO™ software and offer no support for it. We accept no liability whatsoever arising from the use of the free software and we are not obliged to provide corrections nor to develop upgrades. A wide range of commercial software can be found on our homepage. Apps for Android® or Mac iOS can be found in special internet shops. For more details, see our homepage.

Calibration of tilt sensor (Tilt Calibration)

1

2

3

Place device on absolutely flat surface.

4

ON DIST

5

180°

Turn the device horizontally by 180° and place it again on absolutely flat surface.

6

ON DIST

7

Place device on absolutely flat surface.

8

ON DIST

9

180°

Turn the device horizontally by 180° and place it again on absolutely flat surface.

10

ON DIST

i After 2 sec the device goes back to the basic mode.

★ Personalized favorites

1

2

3

4

Select favorite function.

Press selection key left or right. Function is set as favorite above the corresponding selection key.



Select your favorite functions for quick access.

Short cut:
Press 2 sec on a selection-key in the measuring mode. Select your favorite function and press again short on the corresponding selection key.

💡 Illumination

1

2

3

4

Select brightness.

Confirm setting.



To save power reduce brightness if not necessary.

👉 Touch Screen ON/OFF

1

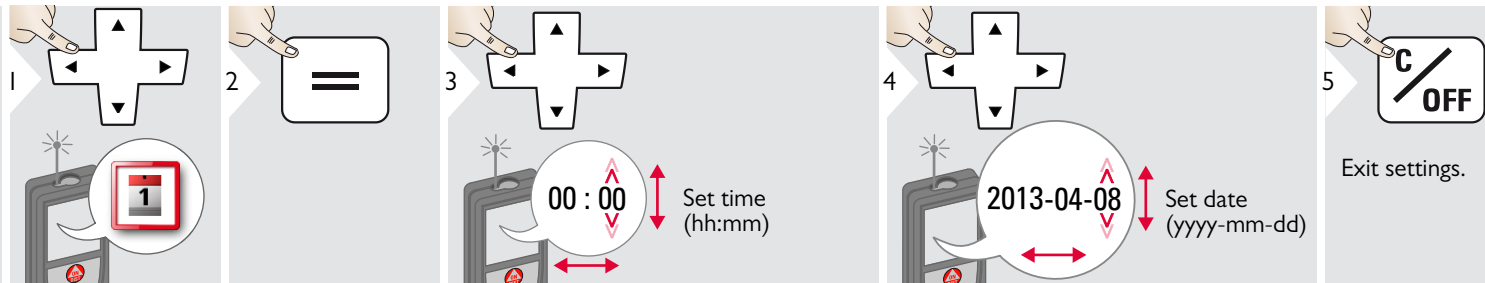
2

3

To deactivate, repeat procedure.

Exit settings.

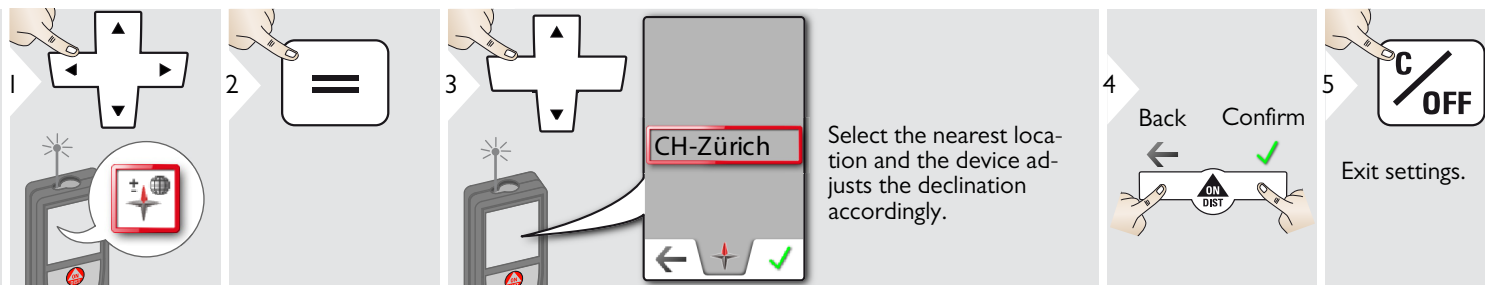
1 Date and Time



Compass Adjustment

Adjusting the magnetic declination

i Depending on your geographic location, the angle of declination may vary from other locations, as the geographic and magnetic poles are aligned. However, if the reference location is not selected, the difference in declination between the poles can differ greatly. For best results, select the nearest geographic reference point using the steps below.



Offset

1

2

3 Select digit.

4 Adjust digit.

5 Approve value.

6 Exit settings.

i An offset adds or subtracts a specified value automatically to or from all measurements. This function allows tolerances to be taken into account. The offset icon is displayed.

Reset

1

2

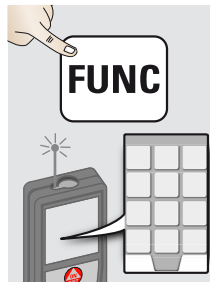
3 Second confirmation with selection keys:
Refuse: ← Confirm: ✓

4 Exit settings.

i Reset returns the instrument to the factory settings. All customized settings and memories are lost.

A HARDWARE-RESET is done by pressing 15 sec on ON/DIST key.

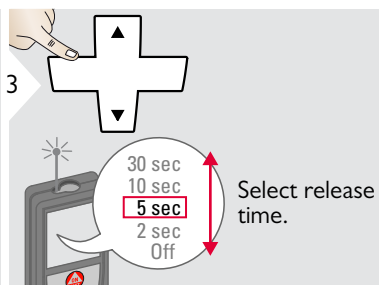
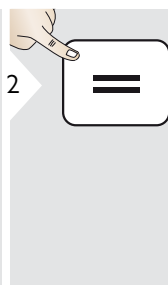
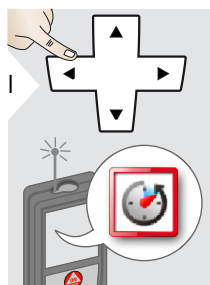
Overview



	Timer
	Calculator
	Adjusting measuring reference
	Memory
	Single Distance Measurement
	Smart Horizontal Mode
	Level
	Area
	Volume
	Photo
	Compass
	Gallery

	Triangle Area
	Long Range Mode
	Height-profile Measurement
	Measuring on sloped objects
	Height Tracking
	Trapezium
	Stake out
	Pythagoras (2-point)
	Pythagoras (3-point)
	Width
	Diameter
	Area from Photo

Timer



i The self release starts if ON/Measure key is pressed.

Calculator

1 Press the function key.

2 Press the equals key.

3 Select key on display.

4 Confirm every key.

Use selection keys for clear or result.

i

The measurement result from the main line is taken over to the calculator and can be used for further calculations.
 Ft/in fractions are converted into ft/in decimal.
 To take over a result from the calculator in the basic mode press DIST before leaving the calculator function.

Adjusting measuring reference/tripod

1 Press the function key.

2 Press the equals key.

3 Press the left arrow key.

4 Confirm setting.

i

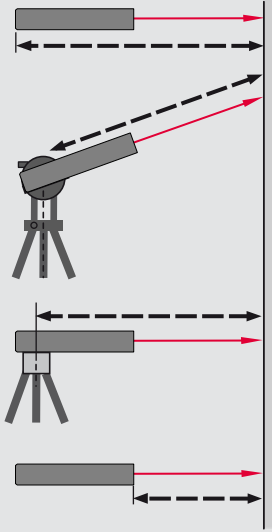
If device is switched off, reference goes back to standard setting (rear of the device).

Distance is measured from the rear of the device (standard setting).

Distance is measured from a Leica DISTO Adapter FTA 360 (lock symbol = permanently)

Distance is measured from the tripod thread permanently.

Distance is measured from the front of the device (lock symbol = permanently).



Memory

1

2

3

4

Switch between measurements.

Delete memory.

Take over value for further actions.

Use Up/Down navigation keys to show more detailed results of the specific measurement.

Short cut

Measuring single distance

1

2

3

4

ON DIST

Aim active laser at target.

8.532 m

Target surfaces: Measuring errors can occur when measuring to colourless liquids, glass, styrofoam or semi-permeable surfaces or when aiming at high gloss surfaces. Against dark surfaces the measuring time increases.

Smart Horizontal Mode

1

2

3

4

ON DIST

Aim laser at target.

40.8°

5.204 m

0.032 m

4.827 m

α

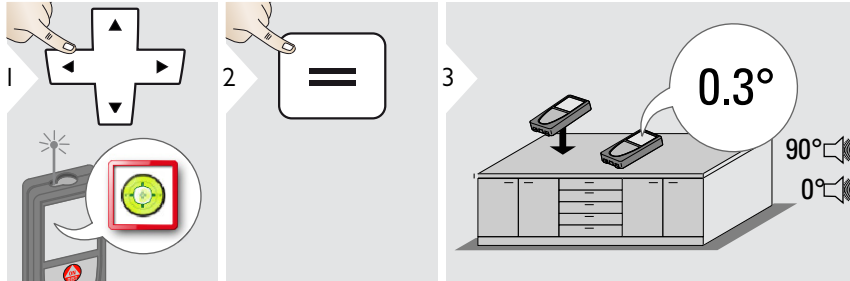
x

y

z

(up to 360° and a transverse tilt of $\pm 10^\circ$)

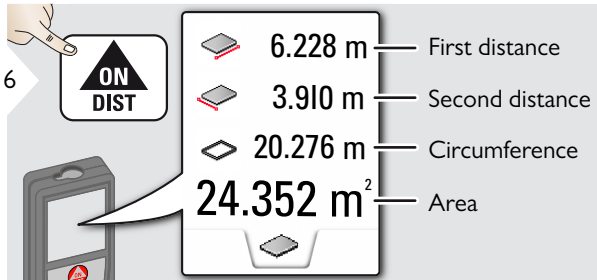
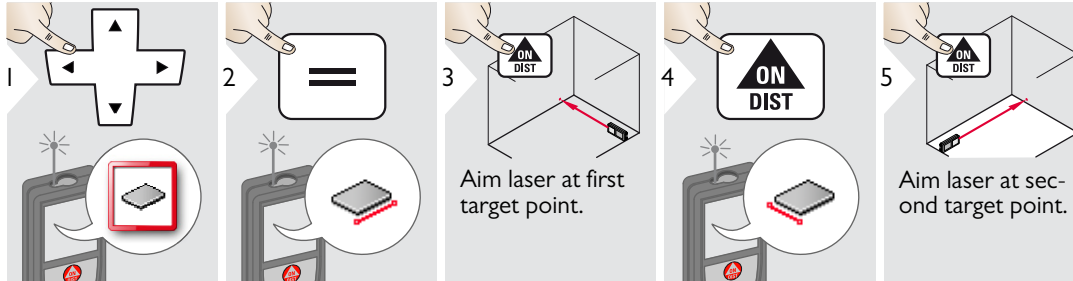
Level



i

Displays inclinations of 360° with a transverse inclination of +/- 10°. Instrument beeps at 0° and 90°. Ideal for horizontal or vertical adjustments.

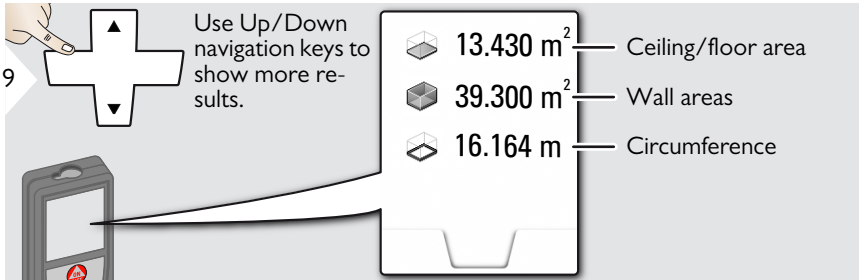
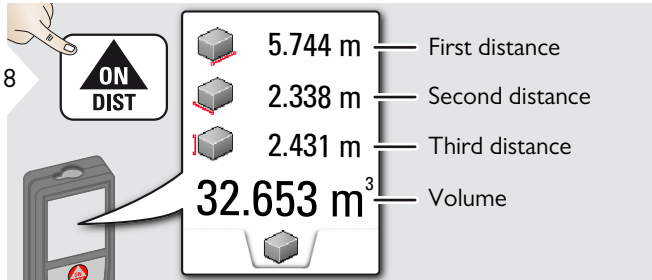
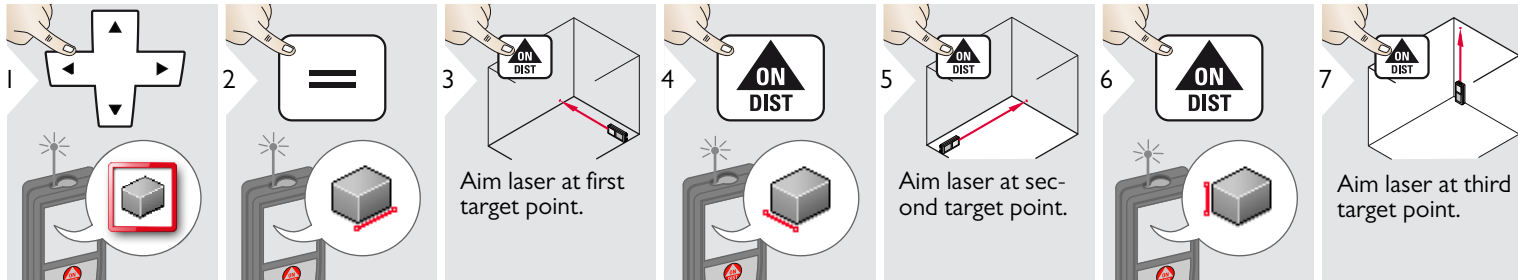
Area



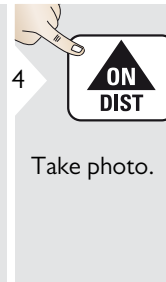
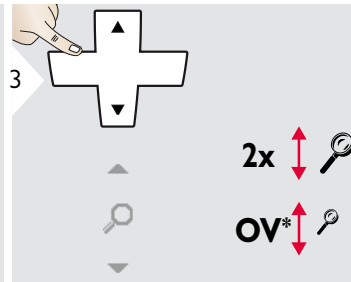
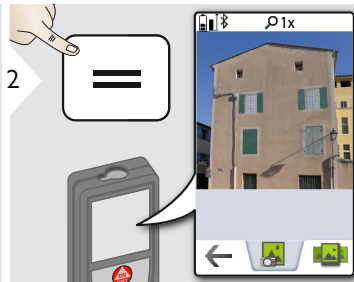
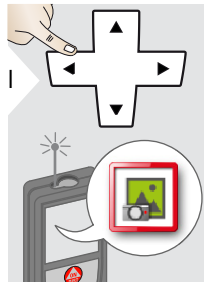
i

The result is shown in the main line and the measured value above.
 Partial Measurements / Painter function:
 Press + or - before starting the first measurement. Measure and add or subtract distances. Finish with =. Measure 2nd length.

Volume



Photo



1

Tap on the camera icon in the middle of the bottom line to take a photo.
For screenshots, press camera key for 2 sec.

* OV = Overview

✦ Compass

<p>1</p>	<p>2</p> <p>Calibrate Compass?</p> <p>Refuse <input type="checkbox"/> Confirm <input checked="" type="checkbox"/></p>	<p>3</p> <p>The arrow always points to true north.</p>	<p>4</p> <p>Check that multifunctional end-piece is not folded out. Keep the device away from any magnet.</p>	<p>5</p> <p>Exit.</p>
----------	---	--	---	-----------------------

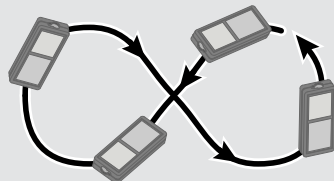
At the following places the compass probably does not work correctly:

- Inside of buildings
- Close to high voltage lines (e.g. on train platforms)
- Close to magnets, metal objects or electrical household appliances

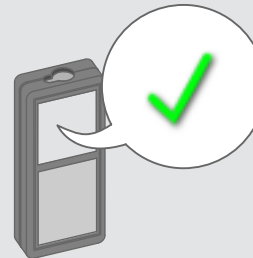
If an error message occurs, the device is tilted too much (>20° over the front / > 10° sideways).

✦ Calibration of Compass:

The compass has to be calibrated before every first measurement after switching on the device.

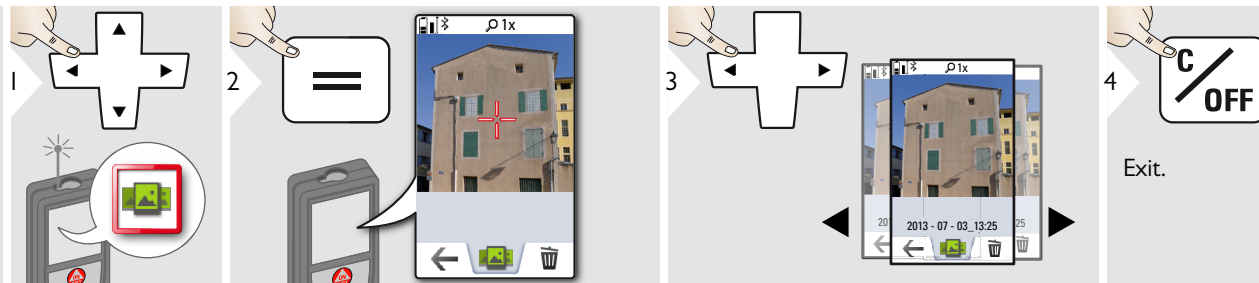


Rotate the device slowly in a figure 8 motion until OK icon appears on the display.



After 2 sec the device goes back to the compass mode.

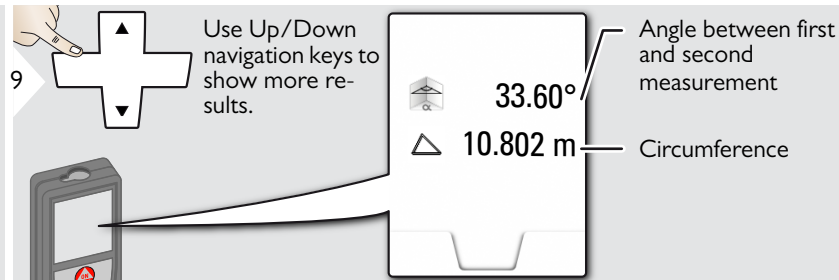
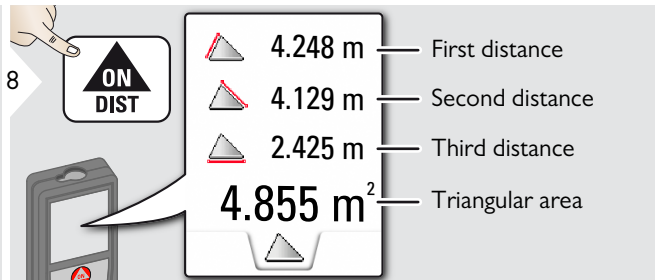
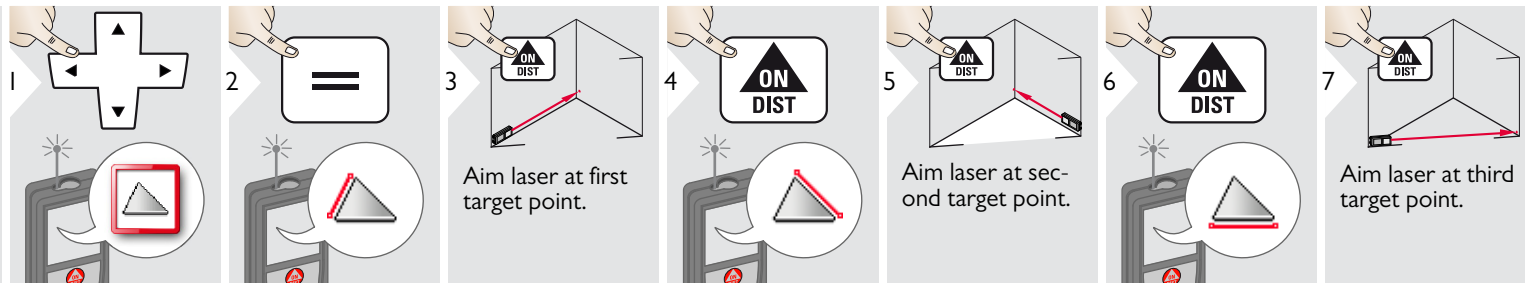
 Gallery



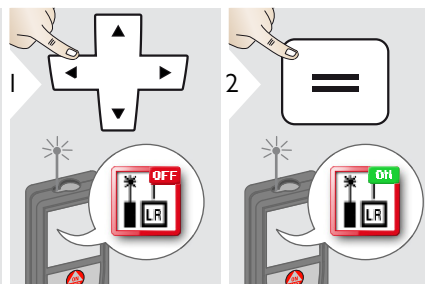
i

If the device is connected to the computer via USB cable, you can download or delete the gallery. It is not possible to upload any data.

▲ Triangular area

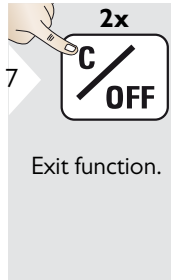
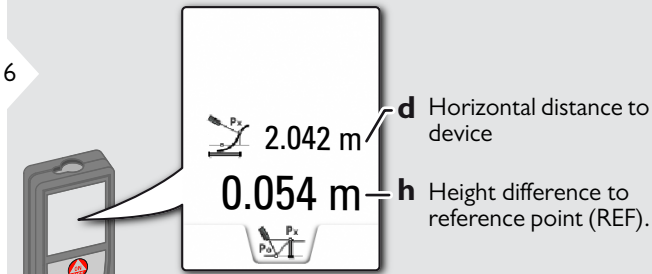
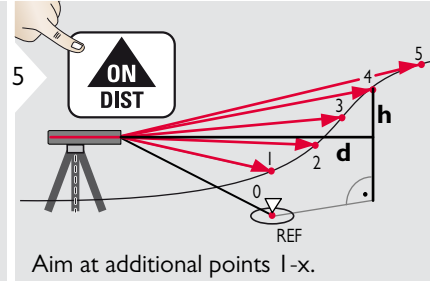
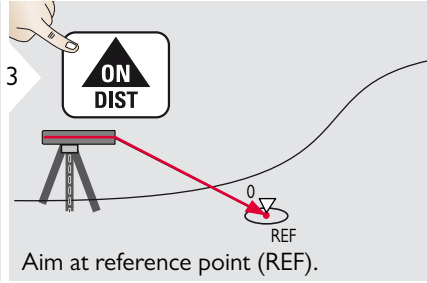
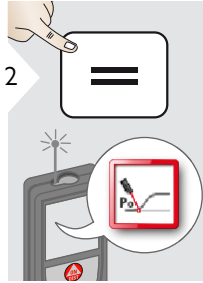
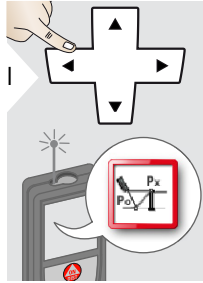


LR Long range mode



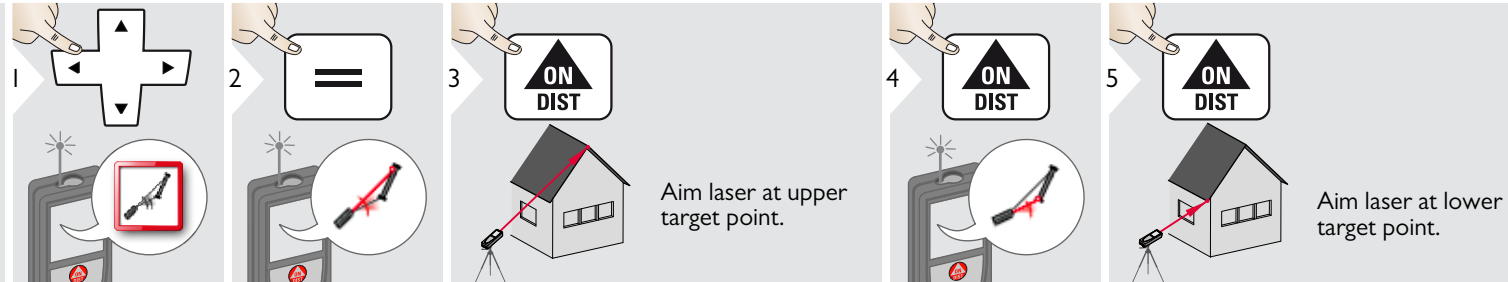
i The long range mode allows measuring of difficult targets in unfavorable conditions e.g. bright ambient light or bad target reflectivity. The measuring time is increased. An icon in the status line shows if the function is active.


 Height-profile measurement

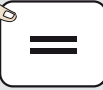



i Ideal for measuring of height differences to a reference point. Can be also used to measure profiles and terrain sections. After measuring the reference point, the horizontal distance and height is displayed for each following point.


 Sloped objects




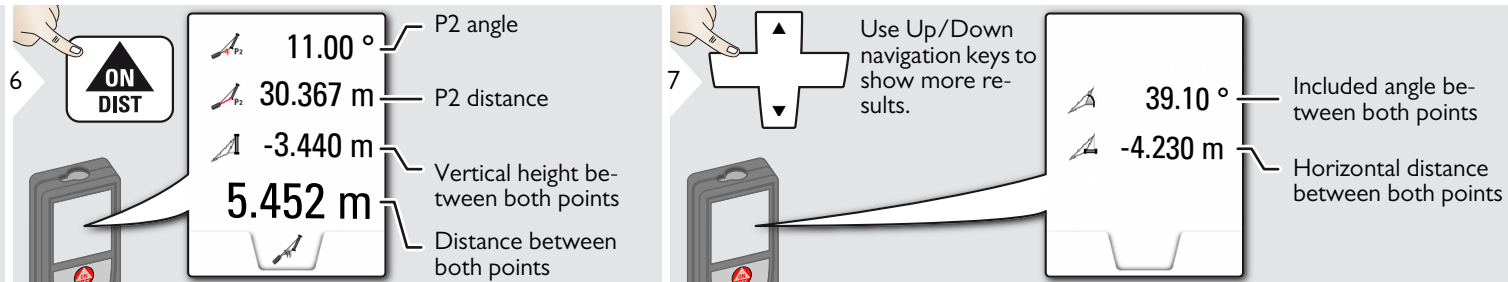
1 


2 




3  Aim laser at upper target point.

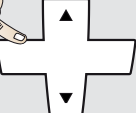
4 



5  Aim laser at lower target point.



6 

-  11.00 ° — P2 angle
-  30.367 m — P2 distance
-  -3.440 m — Vertical height between both points
- 5.452 m** — Distance between both points

7  Use Up/Down navigation keys to show more results.

-  39.10 ° — Included angle between both points
-  -4.230 m — Horizontal distance between both points

i Indirect distance measuring between 2 points with additional results. Ideal for applications such as length and slope of roof, height of chimneys,...

It is important, that the instrument is positioned in the same vertical plane as the 2 measured points. The plane is defined of the line between the 2 points. This means, that the device on the tripod is only moved vertically and not turned horizontally to reach both points.

Height tracking

1 2 3 4 5

Aim laser at lower point.

Aim laser at upper points and angle/height tracking starts automatically.

6 -10.55° α
 6.271 m $P0$
 29.89° β = Tracking angle if device is turned on tripod
3.475 m y = Tracking height if device is turned on tripod

7 -10.55°
 6.271 m
 44.80°
8.478 m

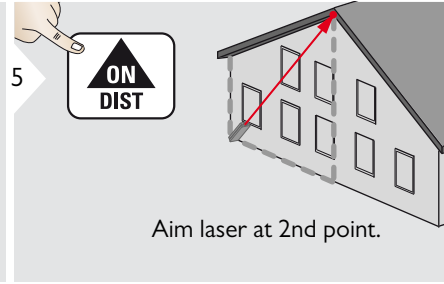
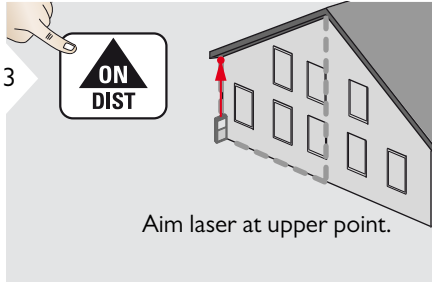
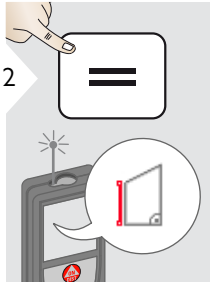
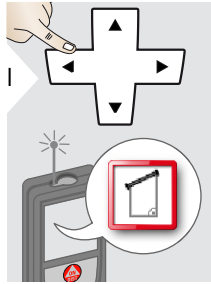
Stops height tracking.

8 Use Up/Down navigation keys to show more results.

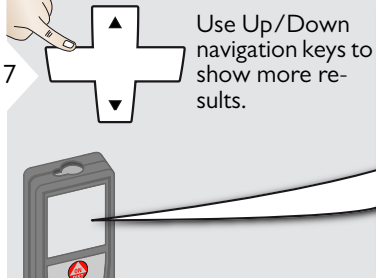
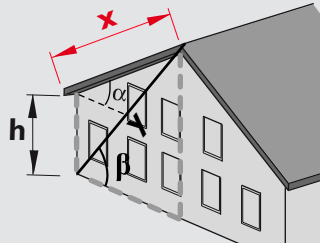
7.160 m z

i Heights of buildings or trees without suitable reflective points can be determined. At the bottom point, distance and tilt is measured - which needs a reflective laser target. The upper point can be targeted with the pointfinder / crosshair and does not need a reflective laser target as only the inclination is measured.

Trapezium



	13.459 m	— h
	16.440 m	— y
	70.80°	— β
	5.790 m	— x

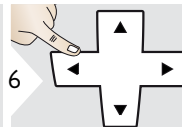
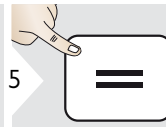
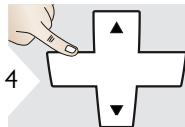
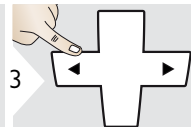
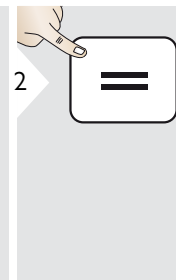
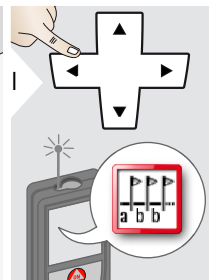
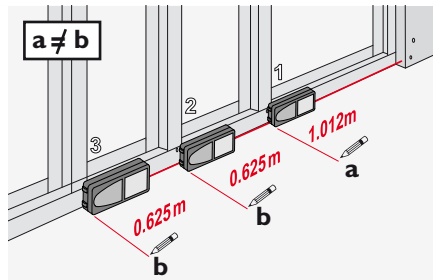
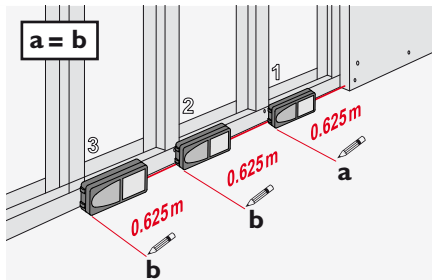


	78.383 m ²	— Trapezium area
	20.9°	— α

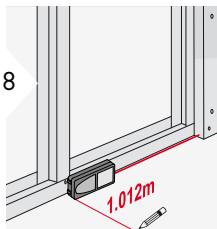
Stake out

1

Two different distances (a and b) can be entered to mark off defined measured lengths.

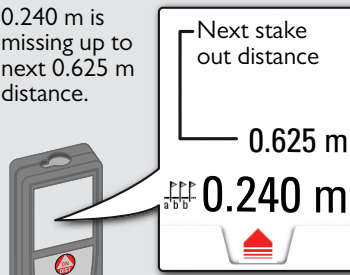


Approve value "b" and start measurement.



Move device slowly along the stake-out line. The distance to the next stake out point is displayed.

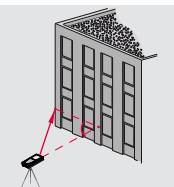
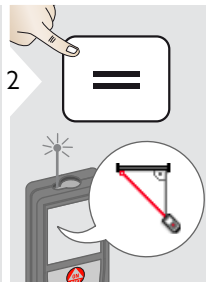
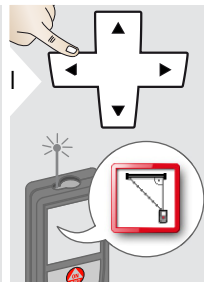
0.240 m is missing up to next 0.625 m distance.



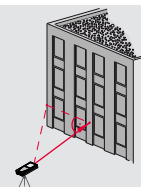
When approaching a stake out point to less than 0.1 m the instrument starts to beep. The function can be stopped by pressing the CLEAR/OFF button.

1

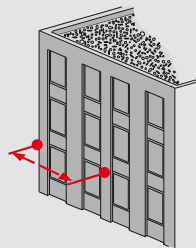
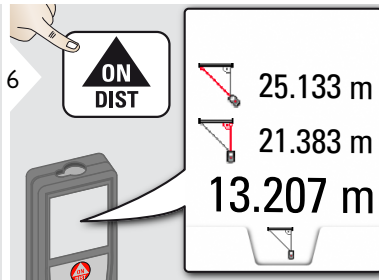
Pythagoras (2-point)



Aim laser at first target.



Aim laser at second target.



i

The result is shown in the main line.
Pressing the measuring key for 2 sec in the function activates automatically Minimum or Maximum measurement.

We recommend to use the pythagoras only for indirect horizontal measuring.
For height measuring (vertical) it is more precise to use a function with the inclination measuring.

Pythagoras (3-point)

1

2

3 Aim laser at first target.

4

5 Aim laser at second target.

6

7 Aim laser at third target.

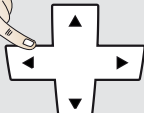
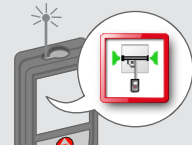
8



24.298 m
21.264 m
23.018 m
20.571 m


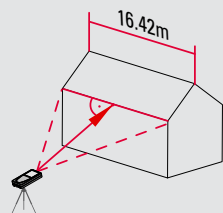
i The result is shown in the main line. Pressing the measuring key for 2 sec in the function activates automatically Minimum or Maximum measurement.

We recommend to use the pythagoras only for indirect horizontal measuring. For height measuring (vertical) it is more precise to use a function with inclination measurement.

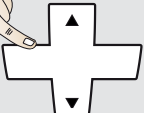
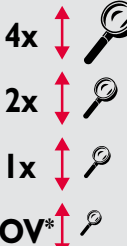
Width


1  


2  


3  

It is absolutely necessary to aim with the laser perpendicular to the object.

4   **4x**



 **2x**

 **1x**

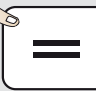
 **OV***

If necessary, use the Zoom for precise aiming.

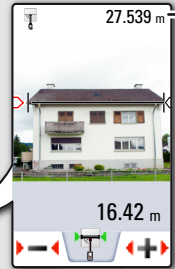
* OV = Overview

5  


Select arrows with the cursor keys or by tapping on the display and adjust with softkeys. Corresponding width is calculated.

6 

Confirm measurement.

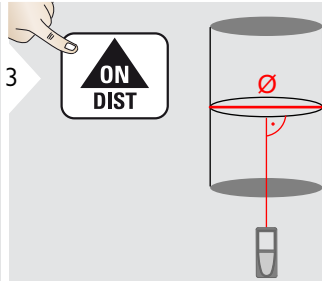
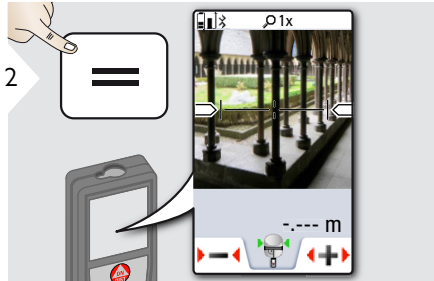
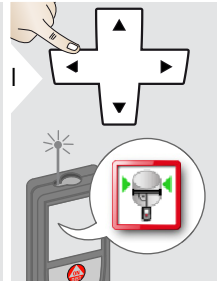
7 

Distance to object

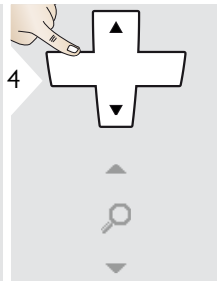
8 


Exit.


 Diameter





Aim laser perpendicular to the middle of the round object.



4x 

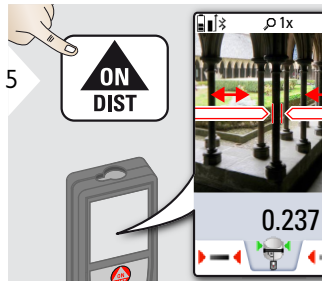
2x 

1x 

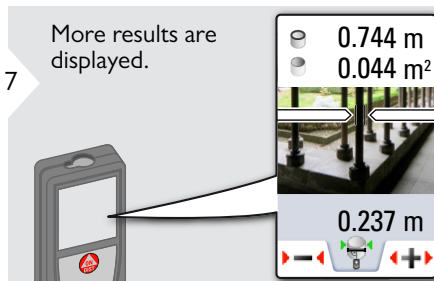
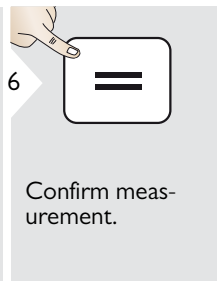
OV* 

If necessary, use the Zoom for precise aiming.

* OV = Overview

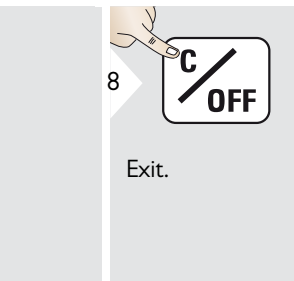


Select arrows with the cursor keys or by tapping on the display and adjust with softkeys. Corresponding diameter is calculated.





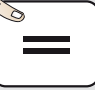
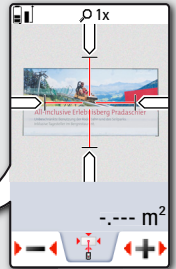
0.744 m — Circumference

0.044 m² — Circular area



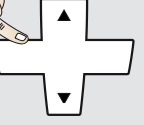
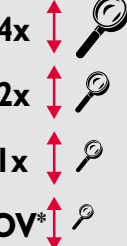
Area from Photo

1  

2  

3  



Aim perpendicular to the horizontal center line of the area. This area must be perfectly flat on the vertical plane.

4  


4x
2x
1x
OV*

If necessary, use the Zoom for precise aiming.

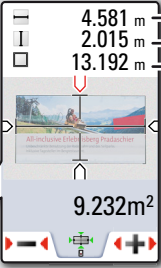
* OV = Overview

5  

Select arrows with the cursor keys or by tapping on the display and adjust with softkeys. Corresponding area is calculated.


6 

Confirm measurement.

7 

Width 4.581 m
Length 2.015 m
Circumference 13.192 m

9.232m²

8 

Exit.

Distance measurement	
Typical Measuring Tolerance*	± 1.0 mm / ~1/16" ***
Maximum Measuring Tolerance**	± 2.0 mm / 0.08 in ***
Typical Range*	200 m / 660 ft
Range at unfavourable condition ****	80 m / 260 ft
Smallest unit displayed	0.1 mm / 1/32 in
Power Range Technology™	yes
Ø laser point at distances	6 / 30 / 60 mm (10 / 50 / 100 m)

Tilt measurement	
Measuring tolerance to laser beam*****	-0.1° / +0.2°
Measuring tolerance to housing*****	± 0.1°
Range	360°

General	
Laser class	2
Laser type	635 nm, < 1 mW
Protection class	IP54 (dust- and splash water protected)
Autom. laser switch off	after 90 s
Autom. power switch-off	after 180 s
Bluetooth® Smart	Bluetooth v4.0
Range of Bluetooth®	< 10 m
Dimension (H x D x W)	61 x 31 x 164 mm 2.4 x 1.2 x 6.5 in
Weight	238 g / 8.4 oz
Temperature range:	
- Storage	-25 to 60 °C -13 to 140 °F
- Operation	-10 to 50 °C 14 to 122 °F
- Charging	-10 to 40 °C 14 to 104 °F

Photos / Screenshots	
Resolution for photos	800 x 600 dpi
Resolution for screenshots	240 x 400 dpi
File format	JPG
Download of gallery	USB

Battery (Li-Ion)	
Rated voltage	3.7 V
Capacity	2.6 Ah
Measurements per battery charge	Approx. 4000
Charging time	Approx. 4 h
Output voltage	5.0 V
Charging current	1 A

* applies for 100 % target reflectivity (white painted wall), low background illumination, 25 °C

** applies for 10 to 100 % target reflectivity, high background illumination, - 10 °C to + 50 °C

*** Tolerances apply from 0.05 m to 10 m with a confidence level of 95%. The maximum tolerance may deteriorate to 0.1 mm/m between 10 m to 30 m, to 0.20 mm/m between 30 m to 100 m and to 0.30 mm/m for distances above 100 m

**** applies for 100 % target reflectivity, background illumination of approximately 30'000 lux

***** after user calibration. Additional angle related deviation of +/- 0.01° per degree up to +/-45° in each quadrant.

Applies at room temperature. For the whole operating temperature range the maximum deviation increases by +/-0.1°.

i At a recommended storage temperature of -20°C to +30°C (-4°F to +86°F), batteries containing a 50% to 100% charge can be stored up to 1 year. After this storage period the batteries must be recharged.

i For accurate indirect results, the use of a tripod is recommended. For accurate tilt measurements a transverse tilt should be avoided.

Functions	
Distance measuring	yes
Min/Max measuring	yes
Permanent measuring	yes
Stake-out	yes
Addition/Subtraction	yes
Area	yes
Triangle area	yes
Volume	yes
Trapezium	yes
Painter function (area with partial measurement.)	yes
Pythagoras	2-point, 3-point
Smart Horizontal Mode / Indirect height	yes
Height-profile measurement	yes
Level	yes
Sloped objects	yes
Height tracking	yes
Memory	yes
Beep	yes
Illuminated colour display	yes
Multifunctional endpiece	yes
Pointfinder (Viewscreen)	4x zoom, OV
Bluetooth® Smart	yes
Personalized Favorites	yes
Timer	yes
Long Range Mode	yes
Calculator	yes
Photo/Screenshot	yes
Compass	yes
Gallery with USB download	yes
Diameter	yes
Width	yes
Area from Photo	yes

If the message **Error** does not disappear after switching on the device repeatedly, contact the dealer.

If the message **InFo** appears with a number, press the Clear button and observe the following instructions:

No.	Cause	Correction
156	Transverse tilt greater than 10°	Hold the instrument without any transverse tilt.
162	Calibration mistake	Make sure, the device is placed on a absolutely horizontal and flat surface. Repeat the calibration procedure. If the mistake still occurs, contact your dealer.
204	Calculation error	Perform measurement again.
240	Data transfer error	Repeat procedure.
252	Temperature too high	Let device cool down.
253	Temperature too low	Warm device up.
255	Received signal too weak, measuring time too long	Change target surface (e.g. white paper).
256	Received signal too high	Change target surface (e.g. white paper).
257	Too much background light	Shadow target area.
258	Measurement outside of measuring range	Correct range.
260	Laser beam interrupted	Repeat measurement.

- Clean the device with a damp, soft cloth.
- Never immerse the device in water.
- Never use aggressive cleaning agents or solvents.

Warranty

Lifetime Manufacturer's Warranty

Warranty coverage for the entire usage time of the product according to Leica Geosystems International Limited Warranty. Free of charge repair or replacement for all products that suffer defects as a result of faults in materials or manufacturing, for the entire life of the product.

3 Years No Cost

Guaranteed service should the product become defective and require servicing under normal conditions of use, as described in the user manual, at no additional charge.

To receive the "3 years no cost" period, the product must be registered at www.leica-geosystems.com/registration within 8 weeks of the purchase date. If the product is not registered, a "2 years no cost" period applies.

The person responsible for the instrument must ensure that all users understand these directions and adhere to them.

Areas of responsibility

Responsibilities of the manufacturer of the original equipment:

Leica Geosystems AG
 Heinrich-Wild-Strasse
 CH-9435 Heerbrugg
 Internet: www.disto.com

The company above is responsible for supplying the product, including the User Manual in a completely safe condition.

The company above is not responsible for third party accessories.

Responsibilities of the person in charge of the instrument:

- To understand the safety instructions on the product and the instructions in the User Manual.
- To be familiar with local safety regulations relating to accident prevention.
- Always prevent access to the product by unauthorised personnel.

- Measuring distances
- Tilt measurement
- Data transfer with Bluetooth®

Prohibited use

- Using the product without instruction
- Using outside the stated limits
- Deactivation of safety systems and removal of explanatory and hazard labels
- Opening of the equipment by using tools (screwdrivers, etc.)
- Carrying out modification or conversion of the product
- Use of accessories from other manufacturers without express approval
- Deliberate dazzling of third parties; also in the dark
- Inadequate safeguards at the surveying site (e.g. when measuring on roads, construction sites, etc.)
- Deliberate or irresponsible behaviour on scaffolding, when using ladders, when measuring near machines which are running or near parts of machines or installations which are unprotected
- Aiming directly in the sun

WARNING

Watch out for erroneous measurements if the instrument is defective or if it has been dropped or has been misused or modified. Carry out periodic test measurements. Particularly after the instrument has been subject to abnormal use, and before, during and after important measurements.


CAUTION

Never attempt to repair the product yourself. In case of damage, contact a local dealer.

WARNING

Changes or modifications not expressly approved could void the user's authority to operate the equipment.

Limits of use

-  Refer to section "Technical data".
- The device is designed for use in areas permanently habitable by humans. Do not use the product in explosion hazardous areas or in aggressive environments.

Disposal



CAUTION

Flat batteries must not be disposed of with household waste. Care for the environment and take them to the collection points provided in accordance with national or local regulations.

The product must not be disposed with household waste.

Dispose of the product appropriately in accordance with the national regulations in force in your country.



Adhere to the national and country specific regulations.

Product specific treatment and waste management can be downloaded from our homepage.

Electromagnetic Compatibility (EMC)



WARNING

The device conforms to the most stringent requirements of the relevant standards and regulations.

Yet, the possibility of causing interference in other devices cannot be totally excluded.

FCC statement (applicable in U.S.)

This equipment has been tested and found to comply with the limits for a Class B digital device, pursuant to part 15 of the FCC Rules. These limits are designed to provide reasonable protection against harmful interference in a residential installation. This equipment generates, uses and can radiate radio frequency energy and, if not installed and used in accordance with the instructions, may cause harmful interference to radio communications.

However, there is no guarantee that interference will not occur in a particular installation. If this equipment does cause harmful interference to radio or television reception, which can be determined by turning the equipment off and on, the user is encouraged to try to correct the interference by one or more of the following measures:

- Reorient or relocate the receiving antenna.
- Increase the separation between the equipment and receiver.
- Connect the equipment into an outlet on a circuit different from that to which the receiver is connected.
- Consult the dealer or an experienced radio/TV technician for help.

This device complies with part 15 of the FCC Rules. Operation is subject to the following two conditions:

- This device may not cause harmful interference, and
- this device must accept any interference received, including interference that may cause undesired operation.

This device complies with Industry Canada license-exempt RSS standard(s). Operation is subject to the following two conditions:

- This device may not cause interference and
- this device must accept any interference, including interference that may cause undesired operation of the device.

Déclaration FCC, applicable aux Etats-Unis

Ce produit a été testé et ses limites ont été jugées conformes à celles prescrites pour les dispositifs numériques de classe B, décrites dans le paragraphe 15 des règles FCC. Ces limites ont pour but de fournir une protection raisonnable contre des interférences nocives dans une installation résidentielle. Les appareils de ce type génèrent, utilisent et peuvent rayonner de hautes fréquences. Ils sont de ce fait susceptibles de perturber la réception radiophonique en cas d'installation non conforme aux instructions.

Même en cas de respect des instructions, l'absence d'interférences dans une installation particulière ne peut cependant être garantie. Si cet instrument perturbe la réception radiophonique ou télévisuelle, ce que l'on constate en éteignant puis en rallumant l'instrument, l'utilisateur peut tenter de corriger ces interférences en appliquant les mesures suivantes :

- Réorienter ou repositionner l'antenne de réception.
- Augmenter la distance entre l'instrument et le récepteur.
- Connecter l'instrument à un autre circuit que celui du récepteur.
- Consulter le revendeur ou un technicien expérimenté dans le domaine radio/TV.

Cet appareil est conforme à la section 15 des règlements FCC. Son fonctionnement est soumis aux deux conditions suivantes :

- cet appareil ne doit pas causer d'interférences nuisibles, et
- cet appareil doit accepter toute autre interférence reçue, y compris les interférences pouvant entraîner un fonctionnement non désiré.

Ce dispositif est conforme à la norme RSS-210 d'Industrie Canada. L'utilisation est sujette aux deux conditions suivantes :

- ce dispositif ne doit pas être la source d'interférences nuisibles, et
- ce dispositif doit accepter toutes les interférences, y compris les interférences pouvant induire des opérations non souhaitées.

Normativa FCC (aplicable en EE UU)

Las pruebas efectuadas han puesto de manifiesto que este equipo se atiene a los valores límite, determinados en la sección 15 de la normativa FCC, para instrumentos digitales de la clase B. Esto significa que el instrumento puede emplearse en las proximidades de lugares habitados, sin que su radiación resulte molesta. Los equipos de este tipo generan, utilizan y emiten una frecuencia de radio alta y, en caso de no ser instalados conforme a las instrucciones, pueden causar perturbaciones en la recepción radiofónica. En todo caso, no es posible excluir la posibilidad de que se produzcan perturbaciones en determinadas instalaciones.

Si este equipo causa perturbaciones en la recepción radiofónica o televisiva, lo que puede determinarse al apagar y volver a encender el equipo, el operador puede intentar corregir estas interferencias de la forma siguiente:

- cambiando la orientación o la ubicación de la antena receptora.
- aumentando la distancia entre el instrumento y el receptor.
- conectando el instrumento a un circuito distinto al del receptor.
- asesorándose por el vendedor o algún técnico de radio-televisión.

Use of the product with Bluetooth®

WARNING

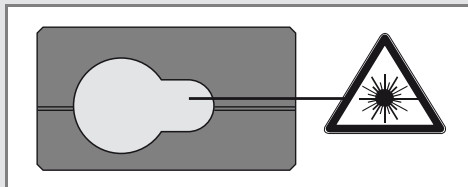
Electromagnetic radiation can cause disturbances in other equipment, in installations (e.g. medical ones such as pacemakers or hearing aids) and in aircraft. It can also affect humans and animals.

Precautions:

Although this product conforms to the most stringent standards and regulations, the possibility of harm to people and animals cannot totally be excluded.

- Do not use the product near petrol stations, chemical plants, in areas with a potentially explosive atmosphere and where blasting takes place.
- Do not use the product near medical equipment.
- Do not use the product in airplanes.
- Do not use the product near your body for extended periods.

Laser classification



The device produces visible laser beams, which are emitted from the instrument: It is a Class 2 laser product in accordance with:

- IEC60825-1 : 2007 „Radiation safety of laser products“

Laser Class 2 products:

Do not stare into the laser beam or direct it towards other people unnecessarily. Eye protection is normally afforded by aversion responses including the blink reflex.

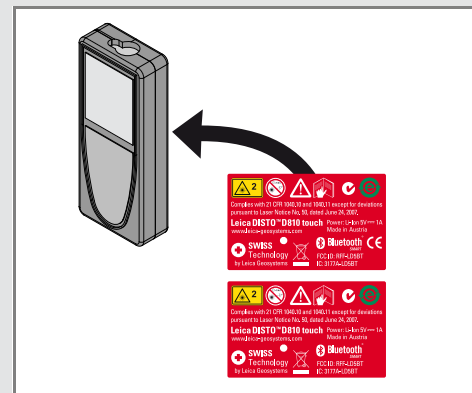
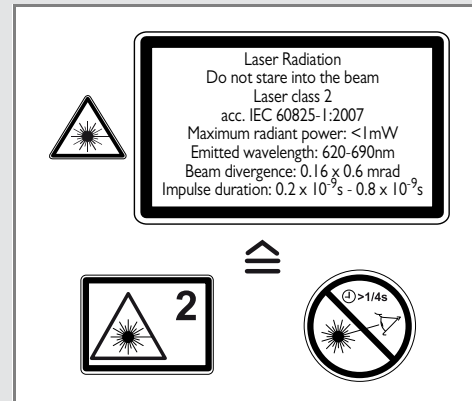
WARNING

Looking directly into the beam with optical aids (e.g. binoculars, telescopes) can be hazardous.

CAUTION

Looking into the laser beam may be hazardous to the eyes.

Labelling



Subject to change (drawings, descriptions and technical data) without prior notice.

Leica Geosystems AG, Heerbrugg, Switzerland has been certified as being equipped with a quality system which meets the International Standards of Quality Management and Quality Systems (ISO standard 9001) and Environmental Management Systems (ISO standard 14001).

Copyright Leica Geosystems AG, Heerbrugg,
Switzerland 2014
Original text (799093a EN)

Pat. No.: WO 9427164, WO 9818019, WO 0244754, WO 0216964,
US 5949531, EP 1195617, US 7030969, US 8279421 B2,
Patents pending

- when it has to be **right**

Leica
Geosystems