

EasyLog 21CFR

Quick Start Guide



EasyLog
21CFR



DOWNLOAD & INSTALL EasyLog 21CFR SOFTWARE

Windows 7, 8 & 10 (32 & 64bit)

Visit www.easylog21cfr.com and click on the download link.

EasyLog 21CFR Windows Control Software

EasyLog 21CFR is the software platform for Lascar's 21 CFR compliant range of data loggers



Click here to download the EasyLog 21CFR Software



Double click on the downloaded **EasyLog 21CFR Installer.exe** file, and follow the on screen prompts.

To see how EasyLog 21CFR Software meets the regulations, view the checklist at www.easylog21cfr.com

FIRST TIME SETUP

- Double click on the EasyLog 21CFR icon on your desktop.



1 Administrator Setup

Administrator Setup

Before you can use this software you will need to set up an Administrator account. In accordance with 21CFR guidelines, the Administrator will receive email notifications when users are unsuccessful at logging in, so each email settings must be configured as part of the initial setup. If you cancel the setup before completion you will need to re-enter all details when you next open the software.

Login Name (3 to 30 characters)

Signature Details (shown on session data and audits)

First Name Surname

Signature will appear as:

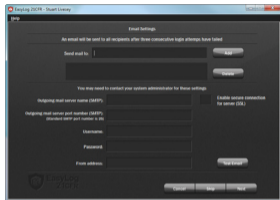
Password Confirm password

Your password must contain a minimum of eight characters with at least one letter and one number.

Cancel Next

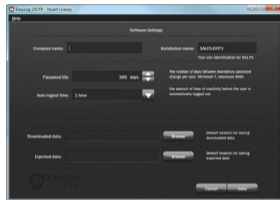
- You will need to create an Administrator for the software by filling in the required information in the setup wizard. Make sure you keep a note of your login details!

2 Email Settings



- You may need to ask your IT support or email service provider for the required details. More information can be found in the software's helpfile. If you aren't sure of the details, you can skip this step and come back to it later.

3 Software Settings

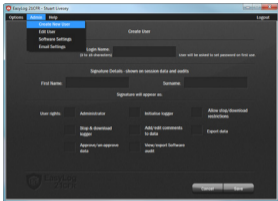


- These are global settings that apply to all users of the software, some of which are required as part of the 21CFR standard.

For a full product data sheet for your data logger, or for more information on the rest of the EasyLog range visit

www.lascarelectronics.com

4 Create Additional Users



- Additional users can then be set up from the Admin menu if required. New users will be asked to create a password when they first log in.

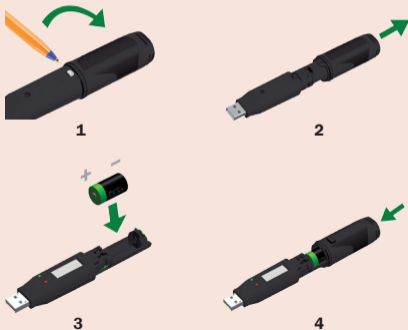
You are now ready to start data logging with EasyLog 21CFR

For more information on how to use EasyLog 21CFR, please see the help file in the software. This can be found by clicking 'Help' > 'Help Topics'.

REPLACING YOUR DATA LOGGER'S BATTERY

Your data logger is provided with a 3.6V 1/2AA battery already installed. You can change the battery by following the instructions below.

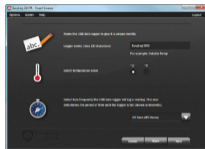
Replacement batteries are available from www.lascarelectronics.com.



STARTING YOUR DATA LOGGER



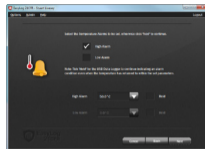
Click on the 'Set up and start the USB data logger' button.



Name your logger and select the logging rate.



Select how the LCD should function, and what happens when your logger is full.



Set high and low alarms if required.



Set restrictions for stopping the logging session.



Select when you would like the logging session to start.



Your logger is now ready for use. Remove from the USB port.

If you would like advice on how best to use the data logger for a particular application, please contact your nearest Lascar representative.

IMPORTANT SAFETY INFORMATION



Repairing or Modifying

Never attempt to repair or modify Lascar products. Dismantling them, other than for the purpose of changing replaceable batteries, may cause damage that is not covered under the warranty. Servicing should only be provided by an authorized supplier.



Disposal and Recycling Information

You must dispose of Lascar products in accordance with relevant laws and regulations. They contain electronic components and lithium batteries and therefore must be disposed of separately from household waste.

NEED HELP WITH YOUR DATA LOGGER?

Contact your nearest Lascar Electronics office:



UK Module House
Whiteparish, Salisbury,
Wiltshire SP5 2SJ
UNITED KINGDOM
T +44 (0) 1794 884567
E sales@lascar.co.uk

USA 4258 West 12th Street
Erie, PA 16505
UNITED STATES
T +1 (814) 835-0621
E us-sales@lascarelectronics.com

HK 8th Floor, China Aerospace Centre
143 Hoi Bun Road
Kwun Tong, Kowloon
HONG KONG
T +852 2389 6502
E sales@lascar.com.hk