

Compact

KEY CAMERA SPECS

206 x 156 Thermal Sensor

36° Field of View

-40° F to 626° F Detection Range

1,000 ft Distance

Works Day & Night

Waterproof Carrying Case

Seek
thermal



Designed to work with both iPhone and Android top models, Seek Compact is the ideal quick connect-and-detect thermal imaging device. Highly portable and easy to carry, it combines powerful thermal imaging with a 206x156 sensor, and a 36-degree wide field of view lens for optimal results, especially indoors. Using its adjustable focus, it can detect anywhere from just a few inches to 1,000 feet away. It does not require a battery or charging. Seek Compact uses advanced infrared technology to let you see thermal images in day or night right on your smartphone screen. It even comes with its own waterproof carrying case.

Designed and Manufactured in Santa Barbara, California with Global Components.

Product Name:	Seek Compact
Available Date:	September 2014
Product Type:	Thermal Imaging Camera Made for Smartphones
Seek Compact Made for iPhone:	UPC: 855753005143 Part Number: LW-AAA
Seek Compact Made for Android:	UPC: 855753005136 Part Number: UW-AAA
Export Regulations	Subject to US Export Regulations

Single Unit	
Included in the box:	<ul style="list-style-type: none">• Seek Compact• Waterproof Carrying Case
Device Dimensions (H x W x D)	1 x 1.75 x .8 inches
Device Weight:	.5 ounces
Box Dimensions (H x W x D)	7 x 3.75 x 1.25 inches
Box Weight:	8.3 ounces
Master Pack	
Included in the Master Pack	80 Units
Master Pack Dimensions	20 x 15 x 16 inches
Master Pack Weight	45 pounds

KEY FEATURES

Easy to Use Indoor Versatility

Wide, 36° field of view quickly scans the inside of any room

High-Performance Thermal Sensor

206 x 156 thermal sensor accurately identifies areas of heat loss and gain

Best in Class Temperature Range

Measure temperatures from -40° to 626°F (-40° to 330°C)

Customize, Record and Share

Intuitive, free mobile app available on Google Play and iTunes App Store

Focusable Lens for Quick Identification

Aim and focus from 6 inches to 1,000 feet (300 meters) for the sharpest image

Waterproof Case that Protects

Comes with its own waterproof case to withstand the elements

BENEFITS & USES

Connect-and-Detect Convenience

Pocket-sized, highly portable, and easy to use

Easily Monitor Home and Building Efficiency

Quickly spot energy loss and HVAC issues

Accurately Inspect Mechanical and Electrical Equipment

Diagnose and assess the problem source quickly

Work Smarter

Be more efficient by utilizing the power of your smartphone

Time of Day Won't Slow You Down

Safely examine any job site in daylight or total darkness

Easily Document and Share

Record images and video of home inspections for easy documentation

TECHNICAL SUMMARY

SPECIFICATIONS	DESCRIPTION
Thermal Sensor	206 x 156
Detection Distance	1,000 Feet (330 Yards, 300 Meters)
Field of View	36 Degree FOV
Temperature Range	-40°F to 626°F (-40°C to 330°C)
Frame Rate	< 9 Hz
Focus	Adjustable Focus
Lens Material	Chalcogenide
Microbolometer	Vanadium Oxide
Pixel Pitch	12 Microns
Spectral Range	7.5 - 14 Microns
User Interface	Free Seek Thermal Mobile App
Temp. Display Scale	Fahrenheit or Celsius
Color Palettes	9 Options
Storage Media	Stores Directly to Smartphone
Battery	Powered by Smartphone. Consumes up to 280 mW
Phone Compatibility	iPhone® and Android™

KEY SPECIFICATIONS

206 X 156 Thermal Sensor	36° Field of View	-40 to 626°F Detection Range	1,000 ft Distance	Waterproof Carrying Case

USER INTERFACE

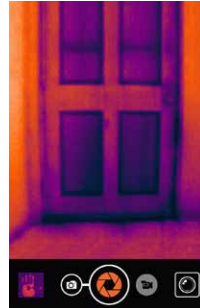
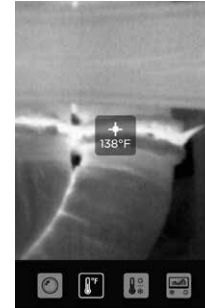
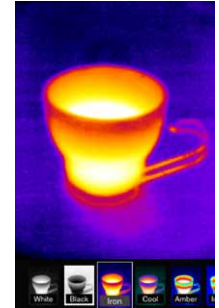


PHOTO & VIDEO



THERMOGRAPHY



COLOR PALETTES

DEVICE COMPATIBILITY



SEEK THERMAL APP & SOFTWARE



PRODUCT ASSETS

