



FLIR **ONE PRO LT**

QUICK START GUIDE

Third Generation
For Android and iOS

Find Quality Products Online at:

www.GlobalTestSupply.com

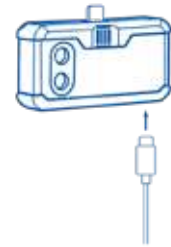
sales@GlobalTestSupply.com

FLIR ONE PRO LT QUICK START GUIDE

⚡ STEP 1

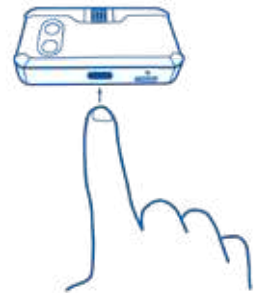
Charge the FLIR ONE Pro LT using the included USB-C power cable connected to a 1A power source. The Charge Indicator LED next to the USB-C connection blinks on and off while the FLIR ONE Pro LT is charging and stays on continuously when it is fully charged. It will take about an hour to completely charge your FLIR ONE Pro LT. Ensure the device is fully charged before using it the first time.

Note: The power cable for the iPhone (with a Lightning connector) will not work to charge the FLIR ONE Pro LT iOS model.



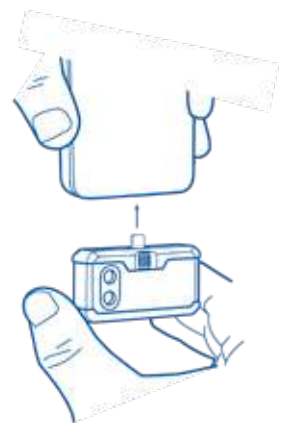
⬇️ STEP 2

Download and install the FLIR ONE app, which is available through the Apple App Store and Google Play Store. When you start the FLIR ONE app, the first-time User Guide will help you get started with the FLIR ONE Pro LT.



⏻ STEP 3

Press the power button on the bottom of the FLIR ONE Pro LT to turn it on. The indicator light will turn orange. It will flash green when the device is ready. If needed, adjust the blue dial of the OneFit™ and extend the connector to the appropriate length to fit through your smartphone's protective case. Connect the FLIR ONE Pro LT to your smartphone and start the FLIR ONE app.



🏠 STEP 4

Check out the app's Home screen to access your gallery, get the latest Tips & Tricks for using your FLIR ONE Pro LT, share your photos and videos with the FLIR ONE community, and stay up to date with all the latest news and promotions from FLIR.

📷 STEP 5

Explore all the camera features on the FLIR ONE Pro LT.

COLOR PALETTES

- Tap the Features icon in the bottom right corner of the screen.
- Choose the color palette that provides the best contrast for interpreting temperature differences in the scene. There are nine options.

SPOT METERS AND REGIONS OF INTEREST (ROI)

- Tap the Spot Meter icon in the top left corner to get a list of spot meters and ROIs. Add the number you want and click the icon again. The FLIR ONE Pro LT can display up to three spot meters, three square ROIs, and three circular ROIs at one time.
- Tap and hold a Spot Meter to move it on the screen. Pinch to adjust the size of an ROI, or tap and hold to move an ROI on the screen.

TIMER

- Tap the clock icon at the top to set a timer for 3 or 5 seconds.

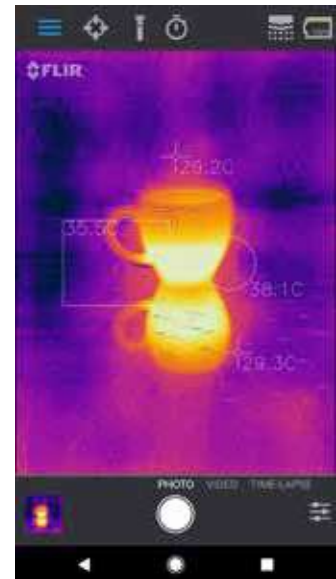
CHANGE CAMERA MODES

- Slide the carousel at the bottom to select Video, Photo, or Time Lapse recording.

MSX® PARALLAX

- The image that displays in the app is a combination of a thermal image and a visible-light image through a unique process called FLIR MSX. The FLIR ONE Pro LT thermal camera can produce an image even in total darkness. When visible light is available, the FLIR ONE Pro LT can use its visible-light camera to enhance the details in the thermal image.
- When looking at an image up close or far away, you can adjust the MSX alignment for the object to align the thermal and visible-light images. Tap the Features button on the bottom right corner, tap MSX Distance, and adjust as needed.

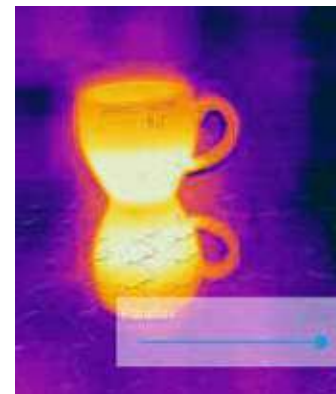
SPOT METERS AND ROIs



MSX DISTANCE SLIDER



ALIGNED



WARNING

The FLIR ONE and FLIR ONE Pro LT are not waterproof. Use caution if the FLIR ONE or FLIR ONE Pro LT are used to observe very hot objects like fire or molten metal.