

# RevealPRO™

AFFORDABLE, HIGH-PERFORMANCE  
HANDHELD THERMAL IMAGING

## KEY CAMERA SPECS

- 320 x 240 Thermal Sensor
- 32° Field of View
- 40 to 626F Temperature Measurement
- 12 inches to 1,800 feet Distance
- Works Day & Night
- 300 Lumen LED Flashlight

Seek™  
thermal



RevealPRO is our most advanced handheld thermal imaging camera yet. Highly durable and easy to use, RevealPRO combines a high-performance 320 x 240 thermal sensor with intuitive software to help you work smarter. And, when you need it, a powerful 300-lumen LED light is available at the touch of a button. Offering adjustable thermal span, level, and emissivity settings, the RevealPRO delivers unprecedented high-resolution thermal imaging and software capabilities available at this price.

Product Name:	Seek RevealPRO
Product Type:	Thermal Imaging Camera
Seek RevealPRO Color: Carbon Fiber	UPC: 855753005648 Part Number: RQ-AAA
Export Regulations	Subject to US EAR Export Regulations.

Single Unit	
Included in the box:	<ul style="list-style-type: none"><li>• Seek RevealPRO</li><li>• Wrist Lanyard</li><li>• Welcome Guide</li><li>• USB Cable</li></ul>
Device Dimensions (H x W x D)	5 x 2.4 x 1.2 inches
Device Weight:	6.25 ounces
Box Dimensions (H x W x D)	7 x 3.75 x 1.75 inches
Box Weight:	13.025 ounces
Master Pack	
Included in the Master Pack	80 Units
Master Pack Dimensions	20 x 15 x 16 inches
Master Pack Weight	65 pounds

## KEY FEATURES

**320 x 240 High-Resolution Thermal Sensor**  
76,800 temperature pixels for maximum image clarity and sensitivity

**Durable, All-In-One Device**  
Rugged, rubberized casing with Corning® Gorilla® Glass and intuitive controls go and work where you do

**Continuous Digital Zoom**  
Zoom up to 4X when you need a closer look

**Long-Lasting Rechargeable Battery**  
Up to 4 hours of thermal imaging in Normal MODE

**See Through the Dark. Light Optional.**  
300 lumen LED flashlight available at the touch of a button

**See More Thermal Detail Where You Need it Most**  
Level and span controls let you isolate and capture the details that matter

## BENEFITS & USES

**Quickly Inspect Condensers and Coils**  
Detect refrigerant leaks, blocked coils, and overheating motors

**Inspect Electrical Panels, Connections, and Fuses**  
Find electrical faults faster and with more confidence

**Check Ventilation Systems for Proper Installation**  
Ensure grilles, registers, and diffusers are sealed for maximum efficiency

**Spot Duct Leaks Invisible to the Human Eye**  
Easily scan a large ducting network to reveal the air leaks

**Identify Inefficient Air Handlers**  
Diagnose faulty equipment and improve energy efficiency

**Find Missing Insulation**  
Easily find missing or poor-performing insulation in seconds

## TECHNICAL SUMMARY

SPECIFICATIONS	DESCRIPTION
Thermal Sensor	320 x 240 (76,800 pixels)
Detection Distance	12 inches to 1,800 feet
Field of View	32 Degree FOV
Temperature Range	-40°F to 626°F
Frame Rate	< 9 Hz
Focus	Fixed Focus
Flashlight	300 Lumen LED
Display	2.4" Color with Corning® Gorilla® Glass
Microbolometer	Vanadium Oxide
Thermal Sensitivity	< 70 mK
Spectral Range	7.5 - 14 Microns
User Interface	Self-Contained Device with 3 Button Navigation
Temp. Display Scale	Fahrenheit, Celsius, or Kelvin
Color Palettes	9 Options (Grayscale and High-Contrast)
Storage Media	4GB Internal Drive (>4,000 images)
Battery	Up to 4 Hours Thermal Imaging in Normal MODE

## 300 LUMEN LED LIGHT



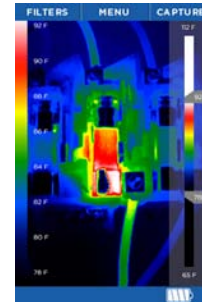
Seek RevealPRO combines powerful thermal insight and a high-performance LED flashlight in one durable device.

## USER INTERFACE



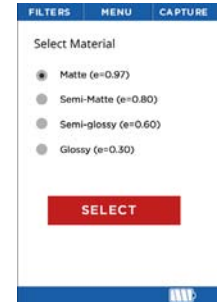
**PHOTOS**

Capture and save thermal images directly to the internal 4GB hard drive



**LEVEL & SPAN**

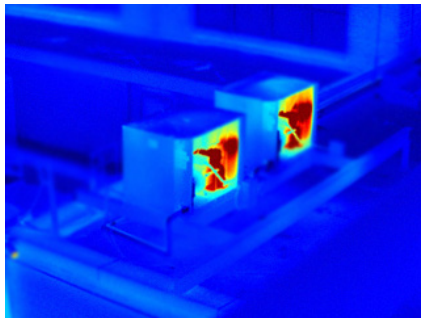
Isolate and capture the thermal details that matter



**EMISSIVITY**

Calibrate for reflective surfaces when accuracy is critical

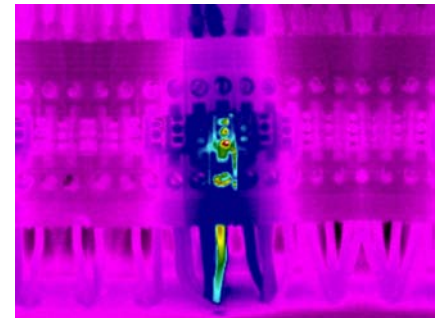
## THERMAL APPLICATIONS



INSPECT AIR HANDLERS AND CONDENSERS



INSPECT DUCTS AND VENTILATION



INSPECT ELECTRICAL CONNECTIONS

