

Split-Core AC Current Sensor SCT-0750 0.75" Opening With Ratings Up To 200 Amps

Description:

Magnelab's SCT-0750 Series split-core current sensors "sense" AC current up to 200 Amps passing through the center conductor. Split-core transformers are ideal for installation on existing electrical wiring by snapping around the conductor. The SCT series have a self-locking mechanism. Custom outputs and other parameters are available at customer request.

Features:

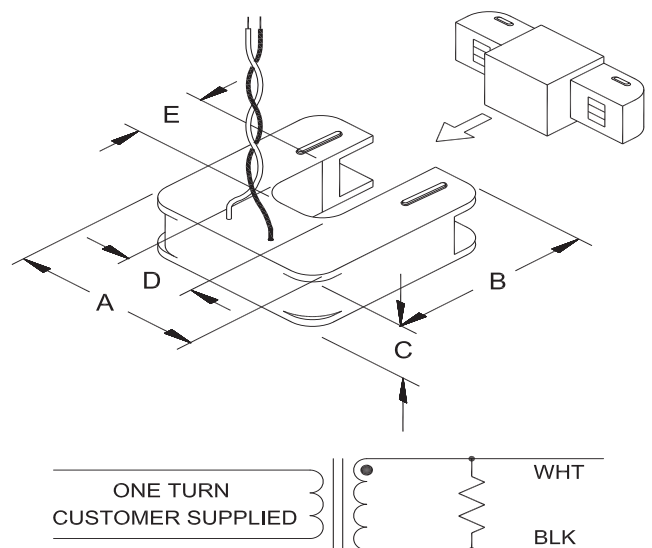
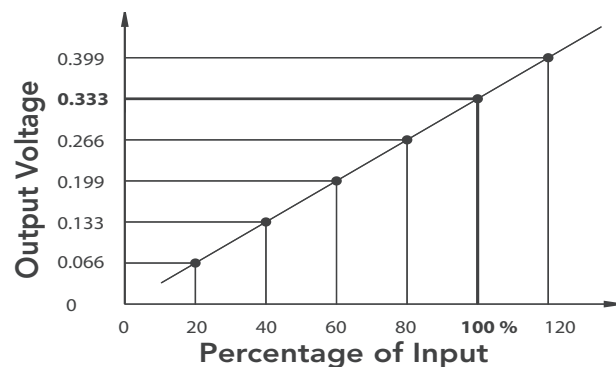
- Inputs: Rated up to 200 Amp
- Outputs: 0.333 Volt at rated current
- Linearity accuracy $\pm 1\%$
- Accuracy at 10% to 130% of rated current
- Phase angle < 2 degrees (valid for 70A or higher)
- Operates from 30 Hz to 1,000 Hz
- 8 ft. twisted-pair lead, 22 AWG
- Maximum Voltage: 600 V (on bare conductor)
- UL Standard 61010-1, EN 60044-1
- Operating temperature: -20°C to $+110^{\circ}\text{C}$



PART NUMBER AND RATING	
SCT-0750-000	No Burden Resistor*
SCT-0750-005	5 Amp
SCT-0750-010	10 Amp
SCT-0750-020	20 Amp
SCT-0750-030	30 Amp
SCT-0750-050	50 Amp
SCT-0750-070	70 Amp
SCT-0750-100	100 Amp
SCT-0750-150	150 Amp
SCT-0750-200	200 Amp

* Zener diode limits the output voltage to 22 V

DIMENSION	INCH	MM
A	2.000	50.80
B	2.100	53.34
C	0.610	15.49
D	0.750	19.05
E	0.750	19.05



Magnelab reserves the right to modify products to make improvements without advance notice.