

# TEMPERATURE MONITORING AT A GLANCE



**LogTag**

**TRED30-16R**

Find Quality Products Online at:

[www.GlobalTestSupply.com](http://www.GlobalTestSupply.com)

[sales@GlobalTestSupply.com](mailto:sales@GlobalTestSupply.com)

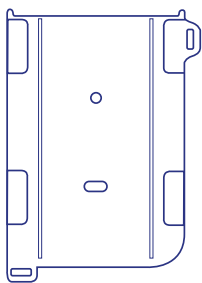


The LogTag® TRED30-16R Temperature Recorder measures and stores up to 15,900 temperature readings over a -40°C to +99°C (-40°F to +210°F) measurement range from an External Probe.

The display is designed to show 'at a glance' if temperature excursions have occurred during the current day and up to the previous 29 days.

The alarm is triggered if temperature readings are outside pre-set alarm limits. The status indicator changes from a ✓ to a X and, if configured, the audible alarm will sound.

# Accessories



**Wall Mount**  
Not Included



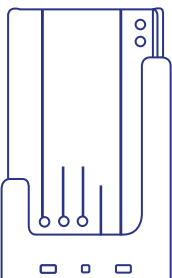
**Glycol Buffer**  
Not Included



**LTI-HID**  
Not Included



**LTI-WiFi**  
Not Included



**External Probe**  
Not Included. (Required)

Compatible probes below:

<b>ST100J</b>	40mm tip length, ø3.2mm.
<b>ST100K</b>	65mm tip length, ø3.2mm.
<b>ST100L</b>	90mm tip length, ø3.2mm.
<b>ST100S</b>	30mm tip length, ø5mm.
<b>ST100T</b>	140mm tip length, ø5mm.
<b>ST100H</b>	Handled with 105mm tip length, ø5mm.

Find Quality Products Online at:

[www.GlobalTestSupply.com](http://www.GlobalTestSupply.com)

[sales@GlobalTestSupply.com](mailto:sales@GlobalTestSupply.com)

**LTI-WiFi-WiFi**  
Not Included

E.g. ST100J-15 for 1.5m or ST100J-30 for 3m cable.

**ST100J**

Handled with 105mm tip length, ø5mm.

# Features

---



Up to 15,900 sets of recordings  
- enough memory for 66 days at  
6min logging



A real time clock provides date/  
time stamps for each temperature  
reading.



Records temperature from -40°C  
to +99°C



Inspections can be recorded at the  
push of a button.



Comprehensive customisation  
options including alarm settings,  
sample interval and trip duration



Built-in audible alarm.



Auto-pause function - unplugging  
the external probe automatically  
suspends alarm & statistics  
processing.



Interchangeable External Probe  
with high quality gold plated  
connector.



User replaceable coin cell battery.



Rapid configuration and download.

# Applications



Healthcare



Pharmaceuticals



Transportation



Cold Room



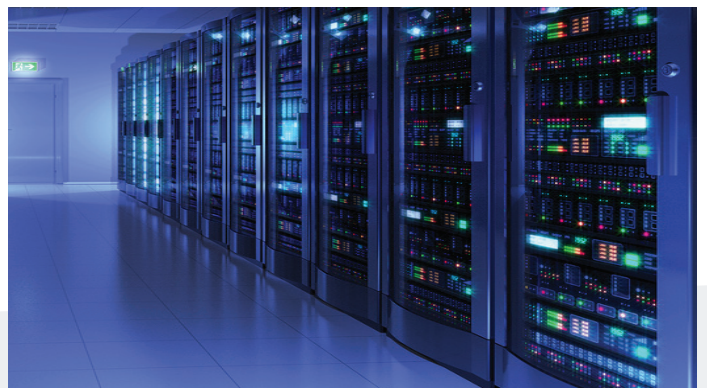
Produce



Blood & Organ Transport



Indoor Space



HVAC

# Specifications

<b>Product Model</b>	TRED30-16R (Replaceable Battery).
<b>External Temperature Sensor Measurement Range</b>	-40°C to +99°C (-40°F to +210°F).
<b>Operating Temperature Range</b>	-30°C to +60°C (-22°F to +140°F).
<b>Storage Temperature Range</b>	-10°C to +40°C (14°F to +104°F).
<b>Rated Temperature Reading Accuracy</b>	Better than ±0.5°C (±0.9°F) for -20°C to +40°C (-4°F to +104°F), typically ±0.3°C (0.6°F). Better than ±0.8°C (±1.4°F) for -40°C to -20°C (-40°F to -4°F), typically ±0.5°C (0.9°F). Better than ±0.8°C (±1.4°F) for +40°C to +70°C (+104°F to +158°F), typically ±0.7°C (1.3°F). Better than ±1.2°C (±2.2°F) for +70°C to +99°C (+158°F to +210°F), typically ±1°C (1.8°F). <i>Actual performance is typically much better than the rated values. Accuracy figures can be improved by recalibration.</i>
<b>Rated Temperature Reading Resolution</b>	0.1°C (0.2°F) for measurements -40°C to +50°C (-40°F to +122°F) 0.2°C (0.4°F) for measurements +50°C to +70°C (+122°F to +158°F) 0.3°C (0.5°F) for measurements +70°C to +80°C (+158°F to +176°F) 0.4°C-0.6°C (0.7°F to 1°F) for measurements +80°C to +99°C (+176°F to +210°F) <i>LogTag Analyze<sup>®</sup> currently displays to one decimal place of °C or °F. The native resolution is what is stored in the LogTag<sup>®</sup>.</i>
<b>Recording Capacity</b>	15,905 temperature readings. 66 days @ 6min logging Day summary statistics memory (for display on LCD): up for 30 days of Max/Min/duration and alarm trigger statistics.
<b>Sampling Interval</b>	Configurable from 30 seconds to hourly.
<b>Logging Start Options</b>	Push button start or specific date & time. Optional start delay of up to 18hours.
<b>Recording Indication</b>	State indicator "REC"
<b>Download Time</b>	Typically less than 10 seconds for full memory (15,905 readings), depending on computer or readout device used.
<b>Environmental</b>	IP61 (when vertically mounted or hung).
<b>Power Source</b>	3V CR2032 (LiMnO <sub>2</sub> ) coin cell battery, user replaceable
<b>Battery Life</b>	1 year storage, followed by 1 year of operation with normal use (6 minute logging, statistics reviewed on the display no more than once daily for no longer than 30 seconds each time, download data monthly). NOTE: Continual activation of the audible alarm will reduce the working life of the battery. When an alarm is triggered, the alarm should be cleared and reset as soon as possible.
<b>Real Time Clock</b>	Built-in real time clock. Rated accuracy ±25ppm @ 25°C (equivalent to 2.5 seconds/day). Rated temperature coefficient is -0.034 ±0.006ppm/°C (I.e typically +/- 0.00294 seconds/day/°C).
<b>Standard External Probe Cable Lengths</b>	Standard: 1.5m (4'11"). Extended: 3 m (9'10") (recommended maximum).
<b>Remote External Probe Type</b>	PTFE (FDA food contact rated) coaxial.
<b>Size</b>	93mm(H) x 54.5mm(W) x 8.6mm(T).
<b>Weight</b>	41g without External Probe.
<b>Case Material</b>	Polycarbonate.

