

The successful progress of products from A to B often relies on ensuring the environment of those goods is maintained at optimum levels to maintain and prolong shelf life.

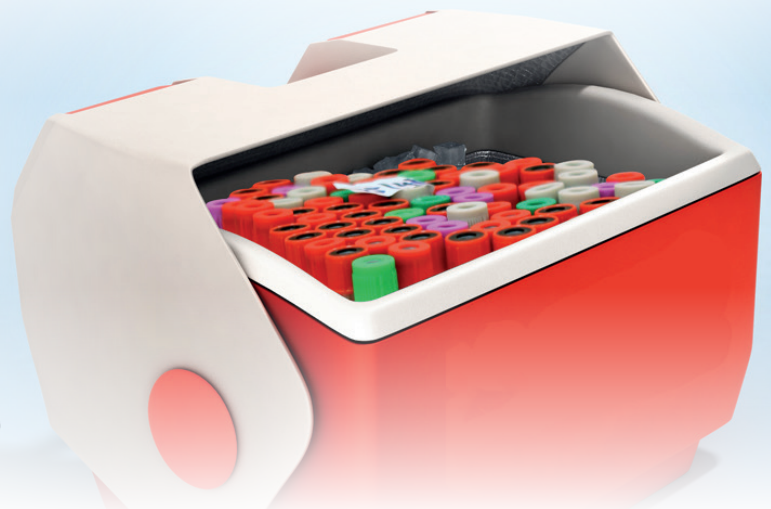
Continuously monitoring those environments throughout the shipping and transportation process provides essential records of what conditions were seen, including acceptable and unacceptable changes that may affect the condition of the products being shipped.

Lascar's series of inexpensive and discrete standalone USB, WiFi and Bluetooth-enabled temperature and temperature & humidity devices provides the tools to monitor, report and store data collected during transportation, proving peace of mind that products arrive in the state they started their journey.

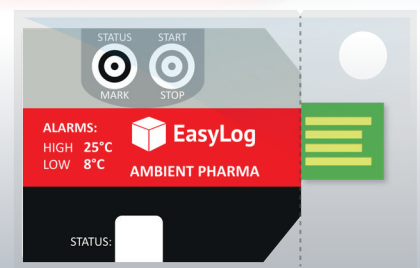
### Low Cost:

Lascar's family of cold chain data loggers provide users with cost-effective, multi-use loggers for all stages of the cold chain process. Pre-programmed with set sample rates and alarms for monitoring Chilled Goods, Frozen Goods and Ripening Goods, simply press an on-board button to start logging. Status LED's indicate whether a unit is currently in logging mode, an alarm has been met during the session or whether the battery is low. Download data by inserting the logger into a PC's USB port to view a graph and export a PDF.

- Waterproof
- Re-useable
- Low cost
- Free software to download data (EL-CC)
- Automatically exports data to PDF (EL-PDF)



EL-CC-2-004 PK10 (Pack of 10) T/RH - Ambient Pharma  
 EL-CC-2-005 PK10 (Pack of 10) T/RH - Blood Transportation  
 EL-CC-2-006 PK10 (Pack of 10) T/RH - Platelets Transportation



EL-PDF-1-004 PK10 (Pack of 10) T - Ambient Pharma Goods



## Standalone

Lascar's EL-USB range includes discrete, battery powered data loggers that measure and store temperature readings on-board until data is downloaded via USB. Simple to set-up, just plug any of these devices into the computer USB port and, using Lascar's FREE software, name the device, choose a sampling rate, select high and low alarms if required and a logging start time. Loggers store up to 16,000 readings, includes displays showing max, min and last logged values as well as flashing alarm and low battery LEDs.

The EL-GFX family boasts over 250,000 readings per parameter, an on-screen display showing max, min and last logged values as well as an on-board graph of the data collected. Buttons allow the user to start, stop and restart the logger in the field and alarm breaches can be registered with both LED and audible alarms.



## Remote

Remotely monitor all blood and blood components in storage using our WiFi connected devices. Lascar's WiFi sensors are easy to set-up using a smartphone App. Simply log on to your EasyLog Cloud account from any internet enabled device to access secure real-time and historical data, remotely change individual sensor settings and create individual locations for one or multiple devices.



## 21 CFR

is the part of the Code of Federal Regulations that establishes the United States Food and Drug Administration (FDA) regulations on electronic records. Part 11 in particular defines the criteria under which electronic records are considered trustworthy, reliable, and equivalent to paper records. If you're required to maintain encrypted and auditable monitored data, review Lascar's range of USB and WiFi 21 CFR compliant products or take a look at Lascar's unique 21 CFR Compliant Cloud monitoring system.



**Caldbeck Surgery**  
Using Lascar's temperature data loggers to monitor vaccine storage conditions




While none of us relish the thought of winter whilst enjoying the summer sun, for many flu vaccine, like many other pharmaceuticals has to be kept in a strictly temperature-controlled environment. Stored between 2 and 8 degrees C, if the temperature of the vaccine

## Case Study: Caldbeck Surgery

Operating since the creation of the NHS in 1947, Caldbeck Surgery is a rural practice, located in the Lake District National Park on the edge of the Northern Fells. Lascar's EL-USB-1 temperature data logger provides the practise with a continuous monitoring system for fridges containing temperature sensitive flu vaccines administered to patients in the run-up to flu season.

## Top Products

	<p><b>EL-CC-2-005 PK10 (Pack of 10)</b> T/RH - Blood Transportation  <b>EL-CC-2-006 PK10 (Pack of 10)</b> T/RH - Platelets Transportation</p>	<p><b>EL-USB-1</b> USB Temperature -35 to +80°C (-31 to +176°F) range</p>	<p><b>EL-USB-2</b> USB Temperature &amp; relative humidity -35 to +80°C (-31 to +176°F) &amp; 0 to 100% RH range</p>	<p><b>EL-GFX-1</b> USB Temperature with graphic screen -30 to +80°C (-22 to +176°F) range</p>
	<p><b>EL-PDF-1-004 PK10 (Pack of 10)</b> T - Ambient Pharma Goods</p>	<p><b>EL-GFX-2</b> USB Temperature &amp; relative humidity with graphic screen -30 to +80°C (-22 to +176°F) &amp; 0 to 100% RH range</p>	<p><b>EL-WiFi-21CFR-T</b> WiFi Temperature data logging sensor -20 to +60°C (-4 to +140°F) range</p>	<p><b>EL-WiFi-21CFR-TH</b> Temperature &amp; relative humidity data logging sensor -20 to +60°C (-4 to +140°F) range, 0 to 100% RH range</p>

**Disclaimer:** Every effort has been made to ensure the accuracy of this publication and no responsibility or liability can be accepted by Lascar Electronics Limited for any errors or omissions in the content of this document. Data and legislation may change, and so we strongly advise you to obtain and review the most recently issued regulations, standards, and guidelines. This publication does not form the basis of a contract.